

Port of Silverdale Waterfront Center

Public Meeting #3
8/18/2020

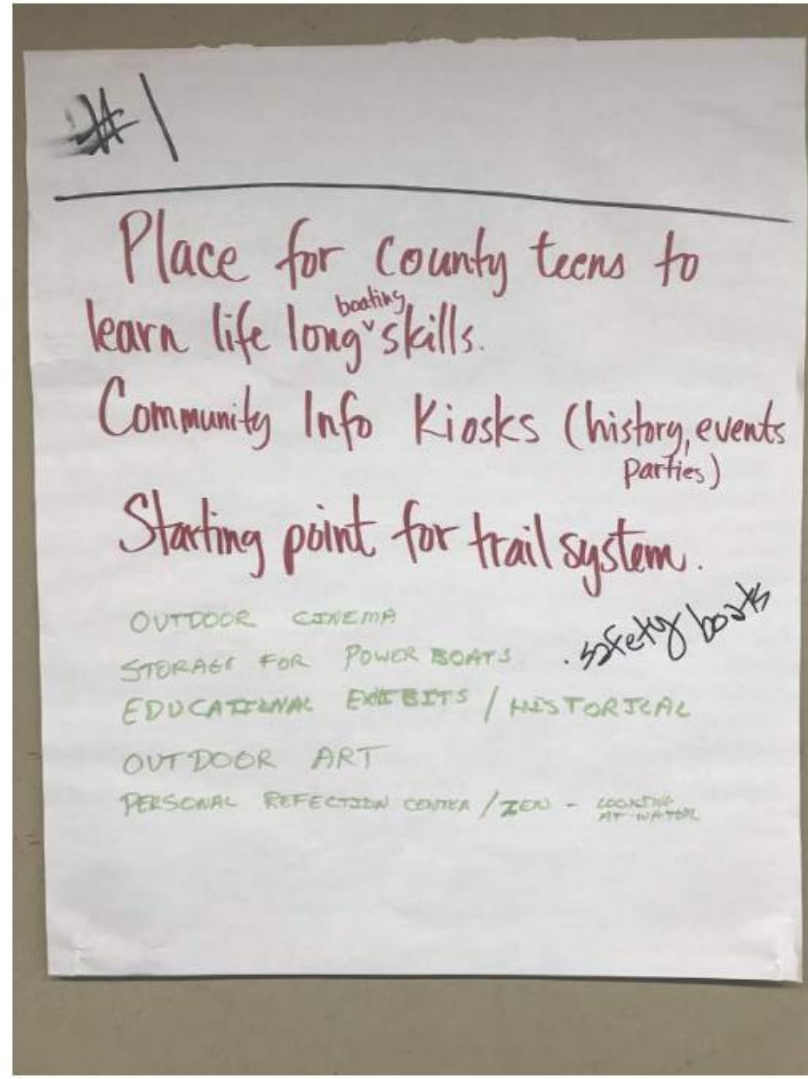
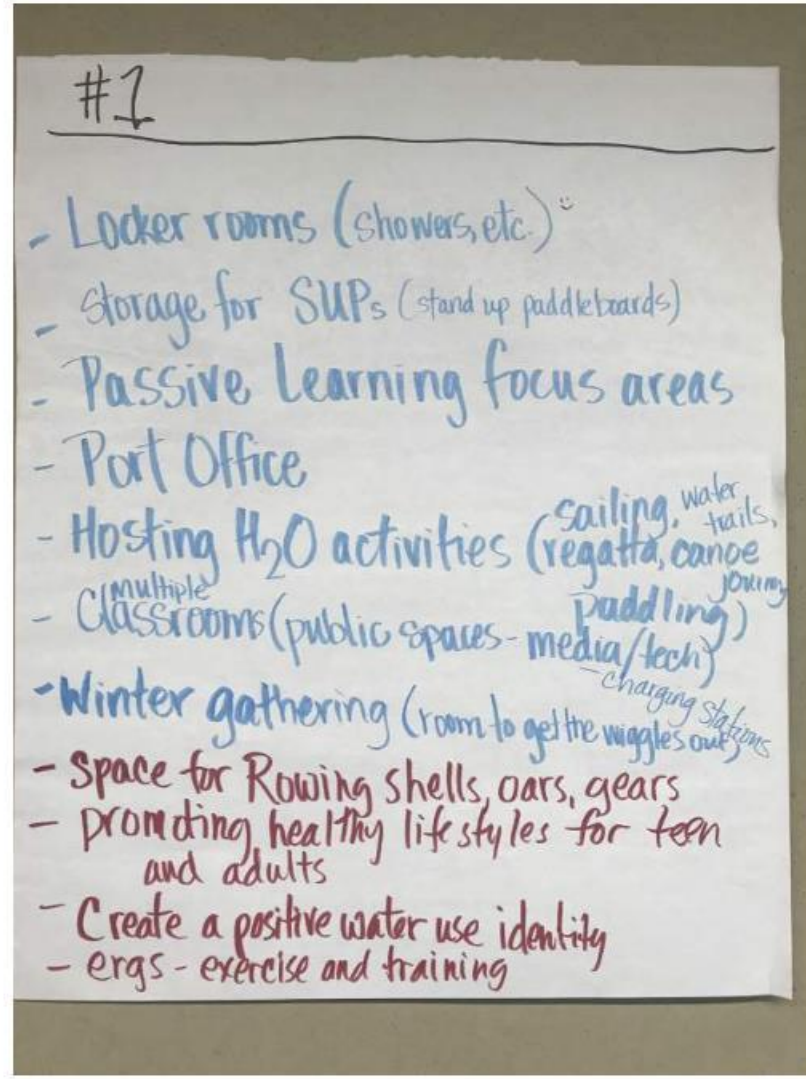
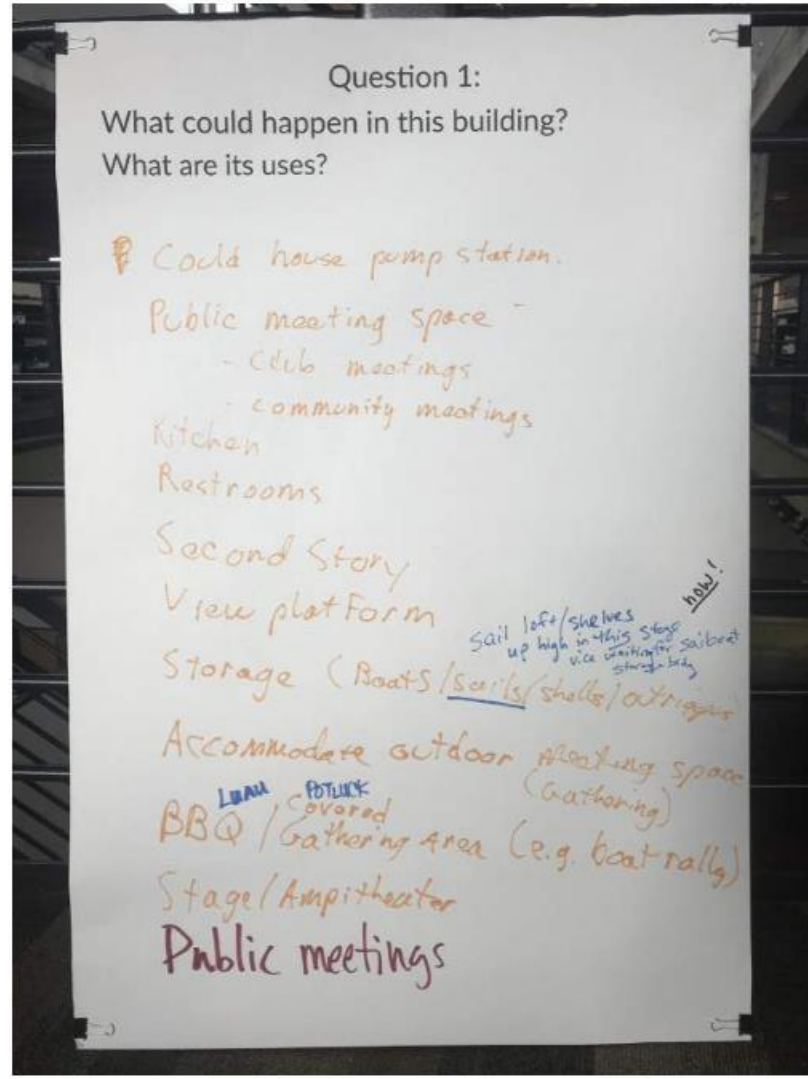


RICEfergusMILLER
ARCHITECTURE INTERIORS PLANNING VIZLAB

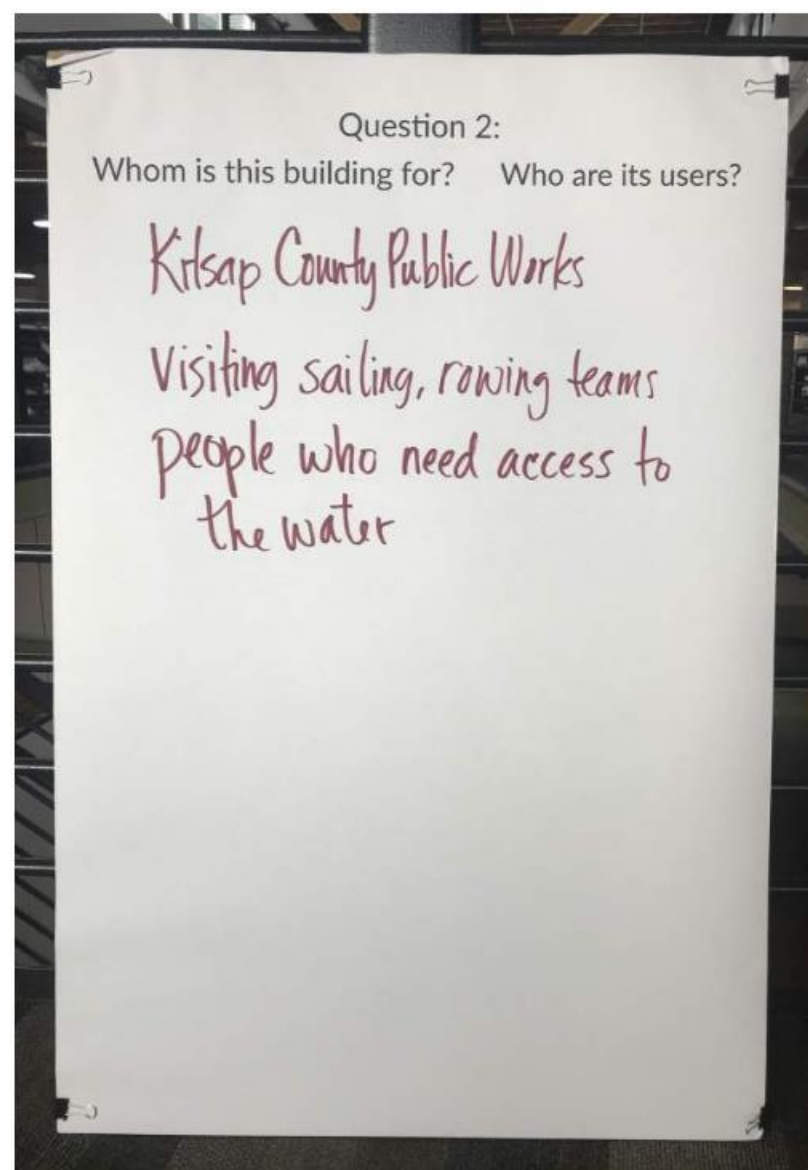
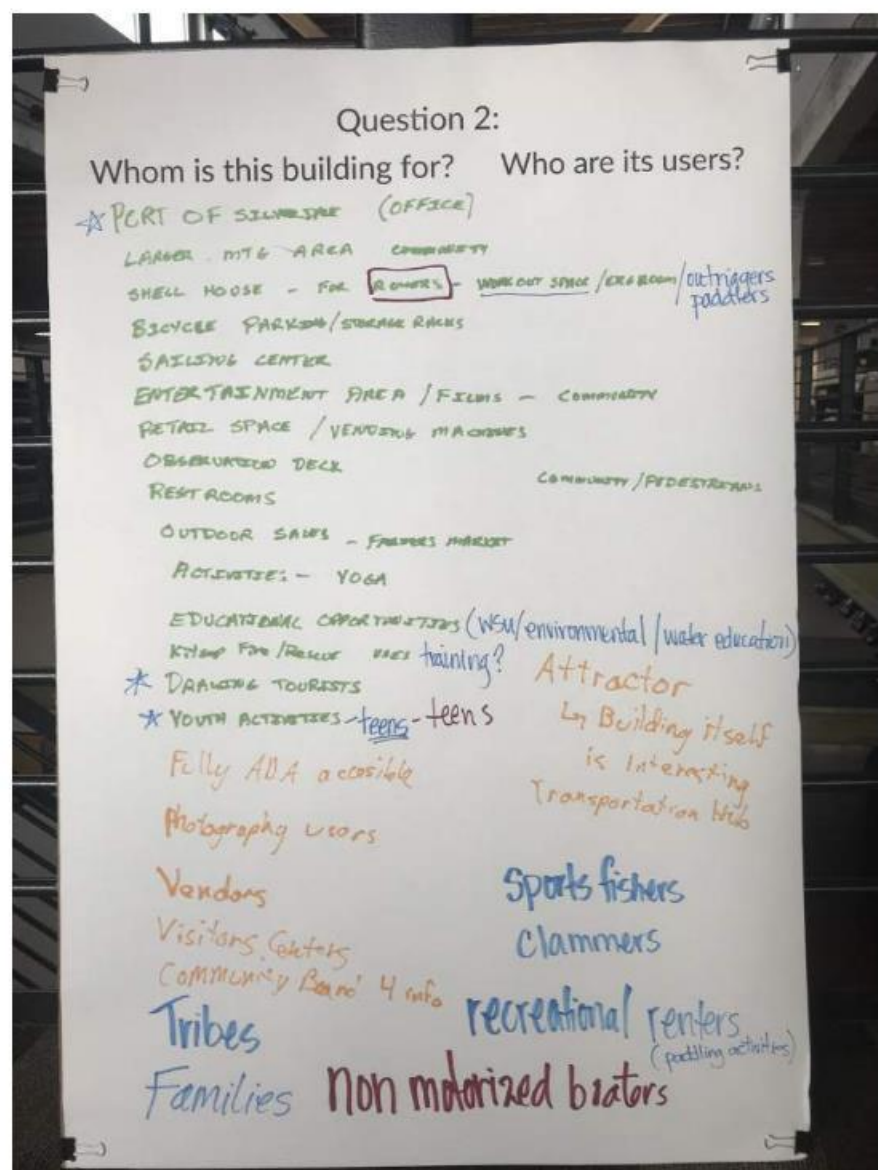
WORKSHOP 1 PROCESS

JANUARY 28, 2020

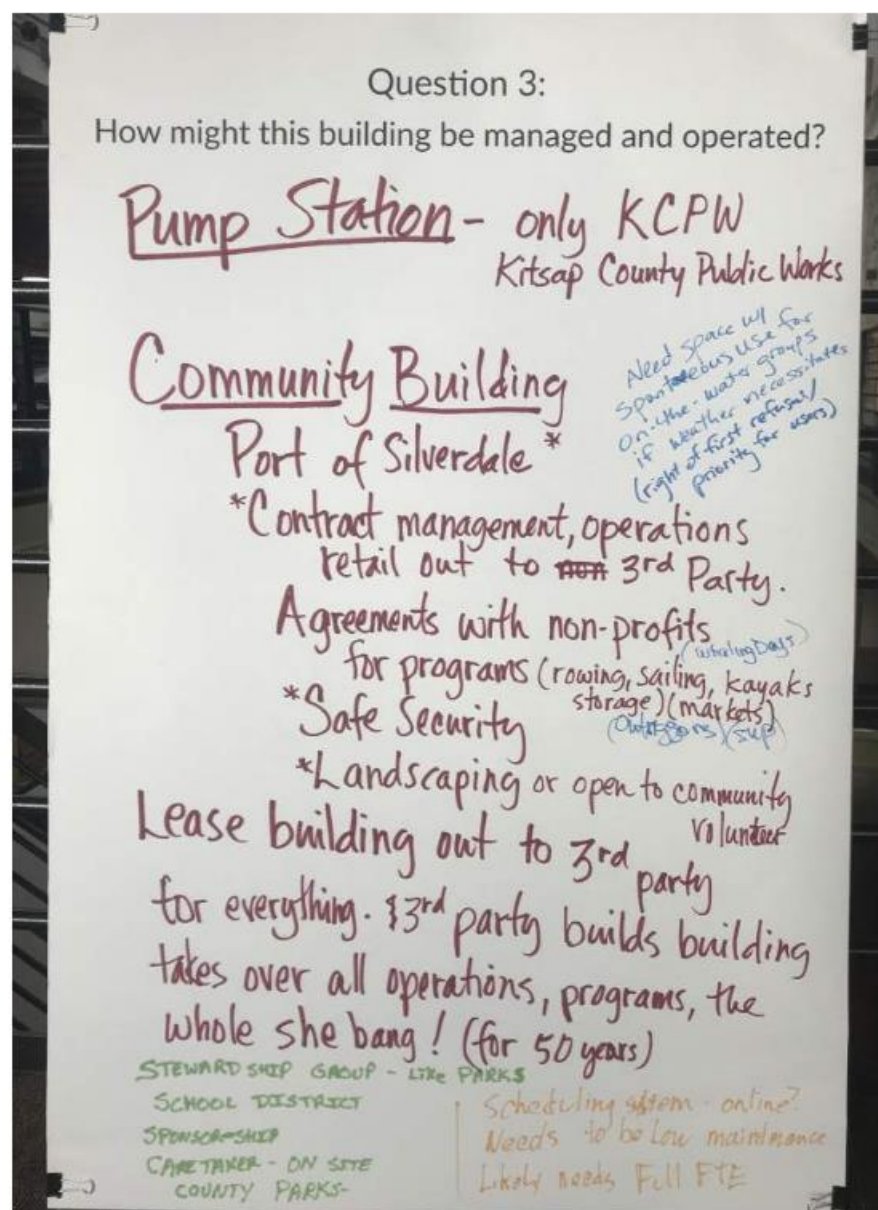
1. What could happen in this building? What are its uses?



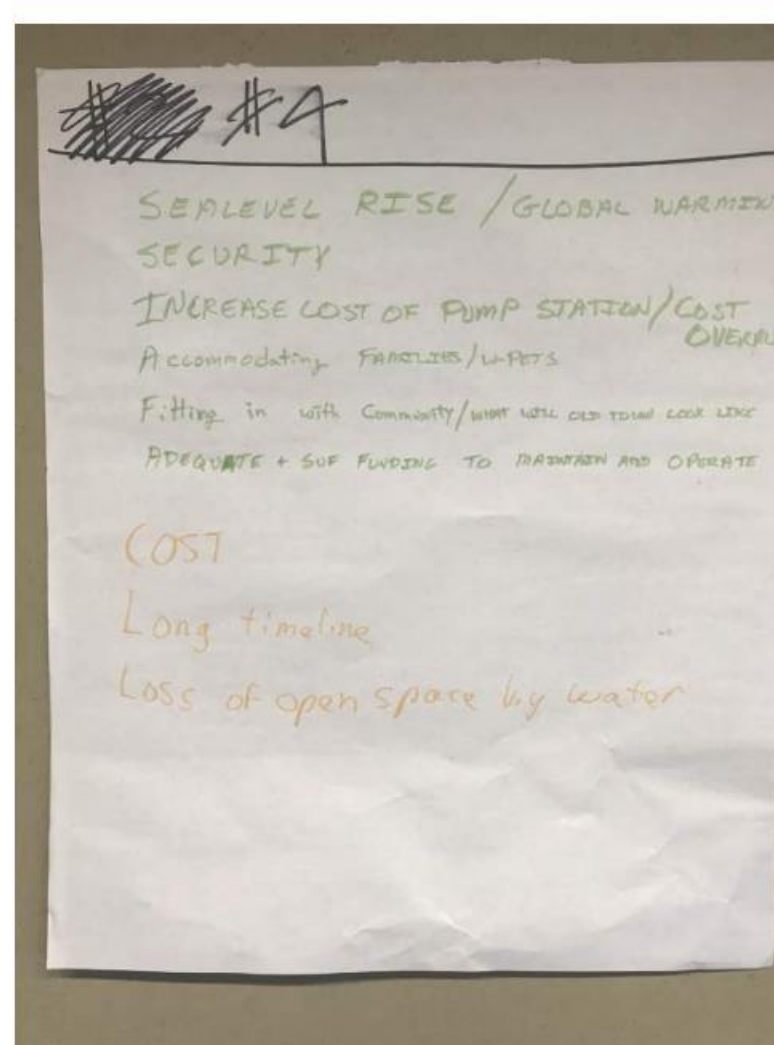
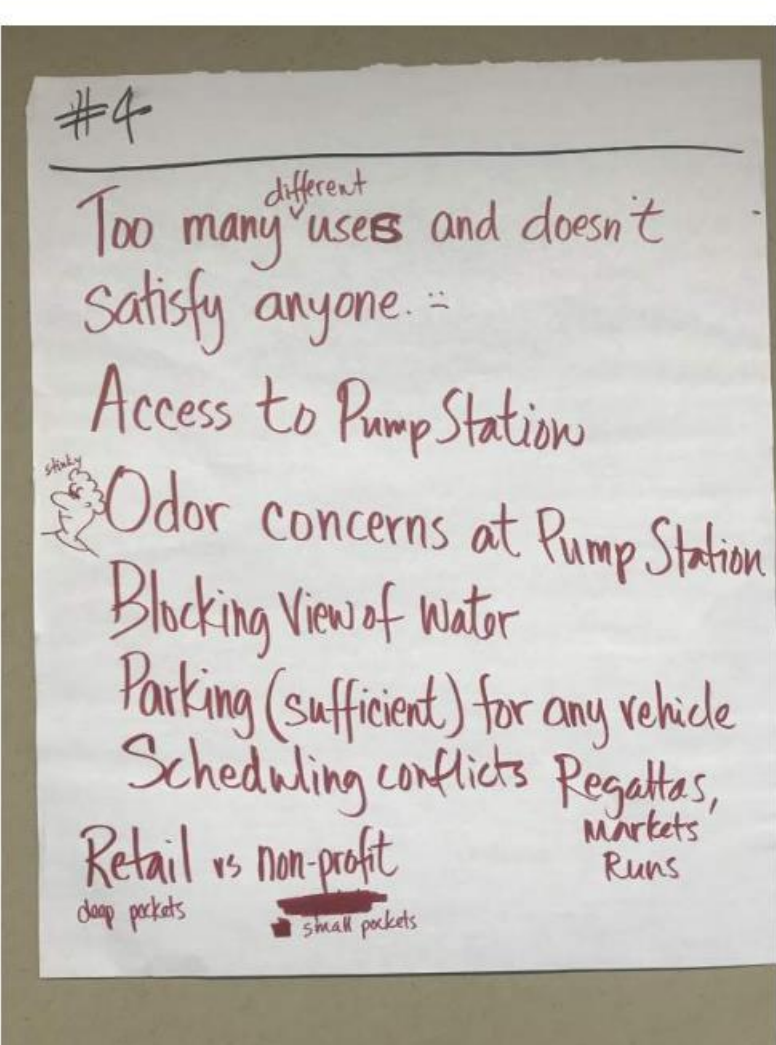
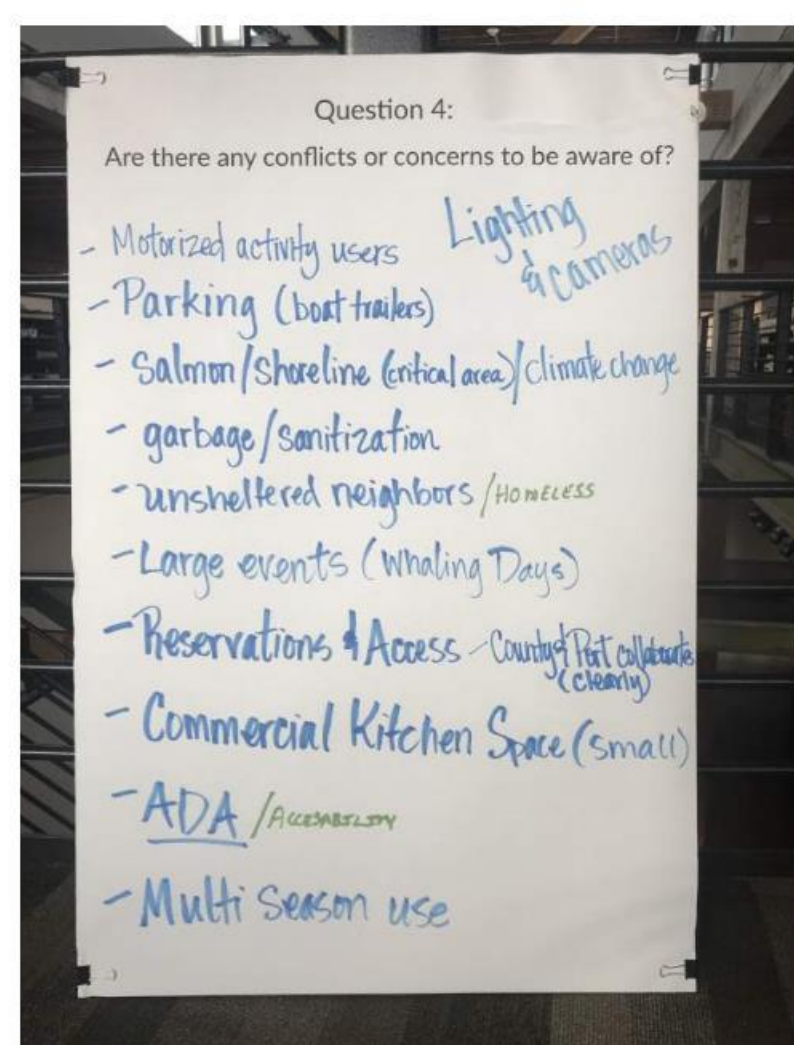
2. Whom is this building for? Who are its users?



3. How might this building be managed and operated?

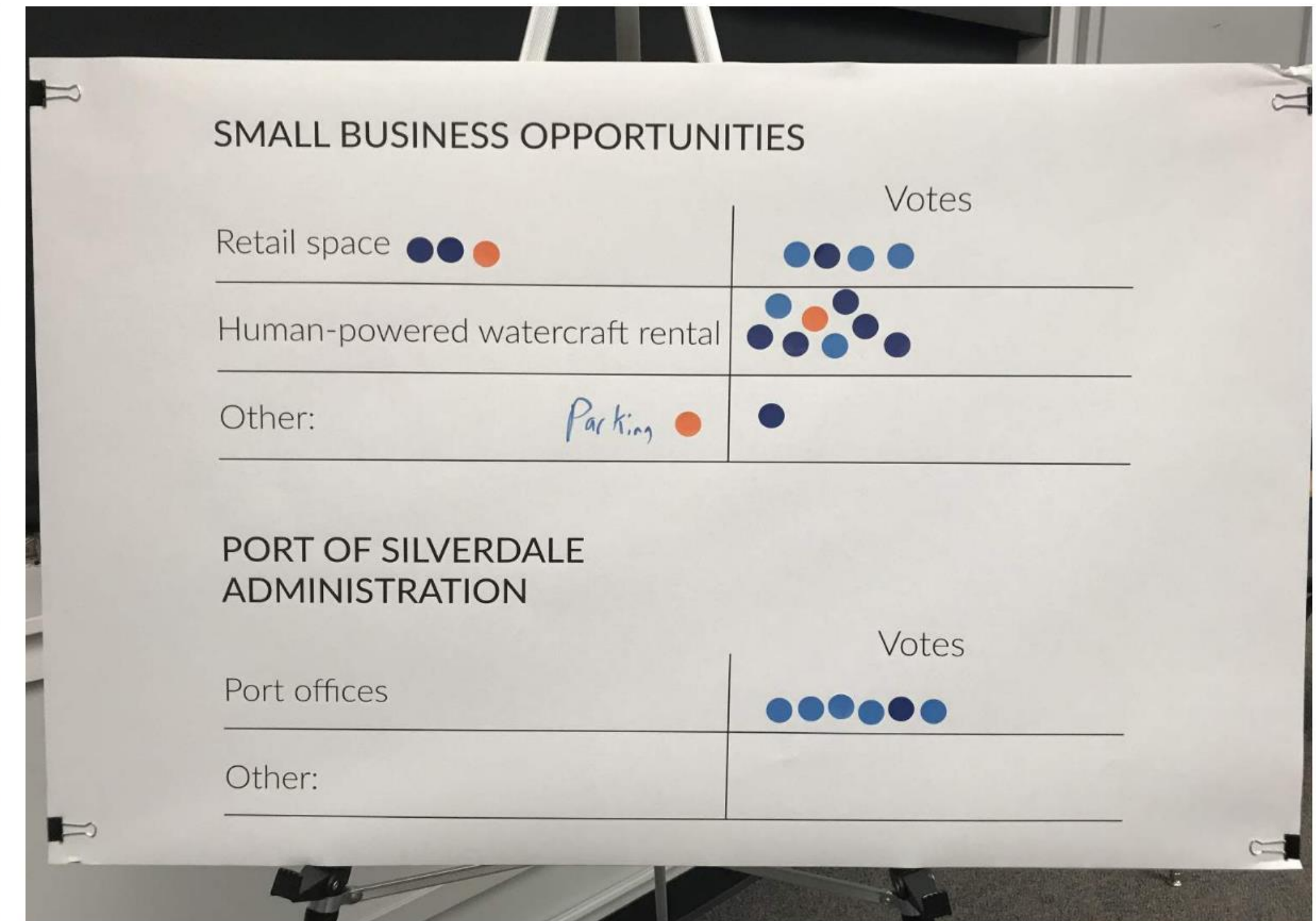
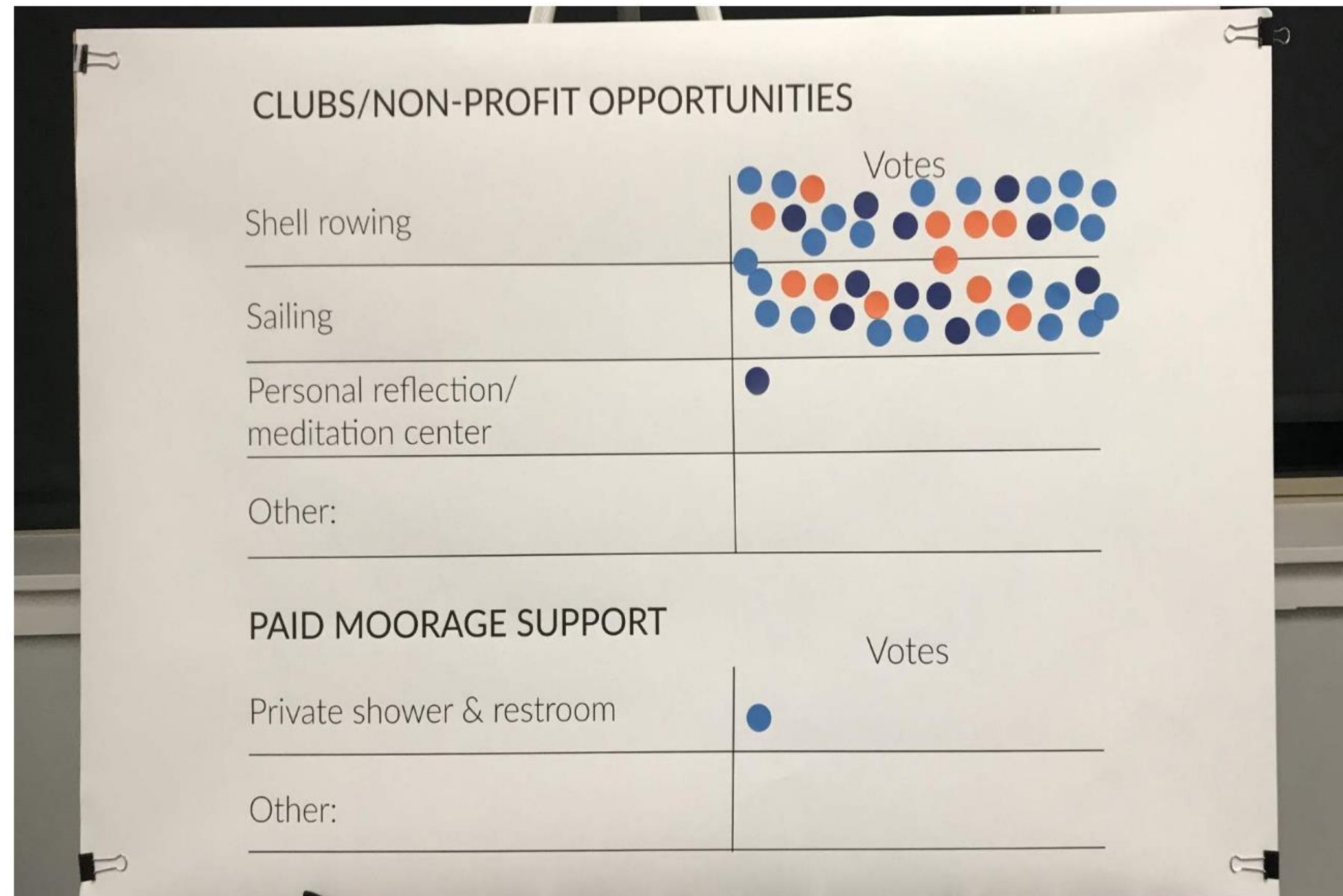
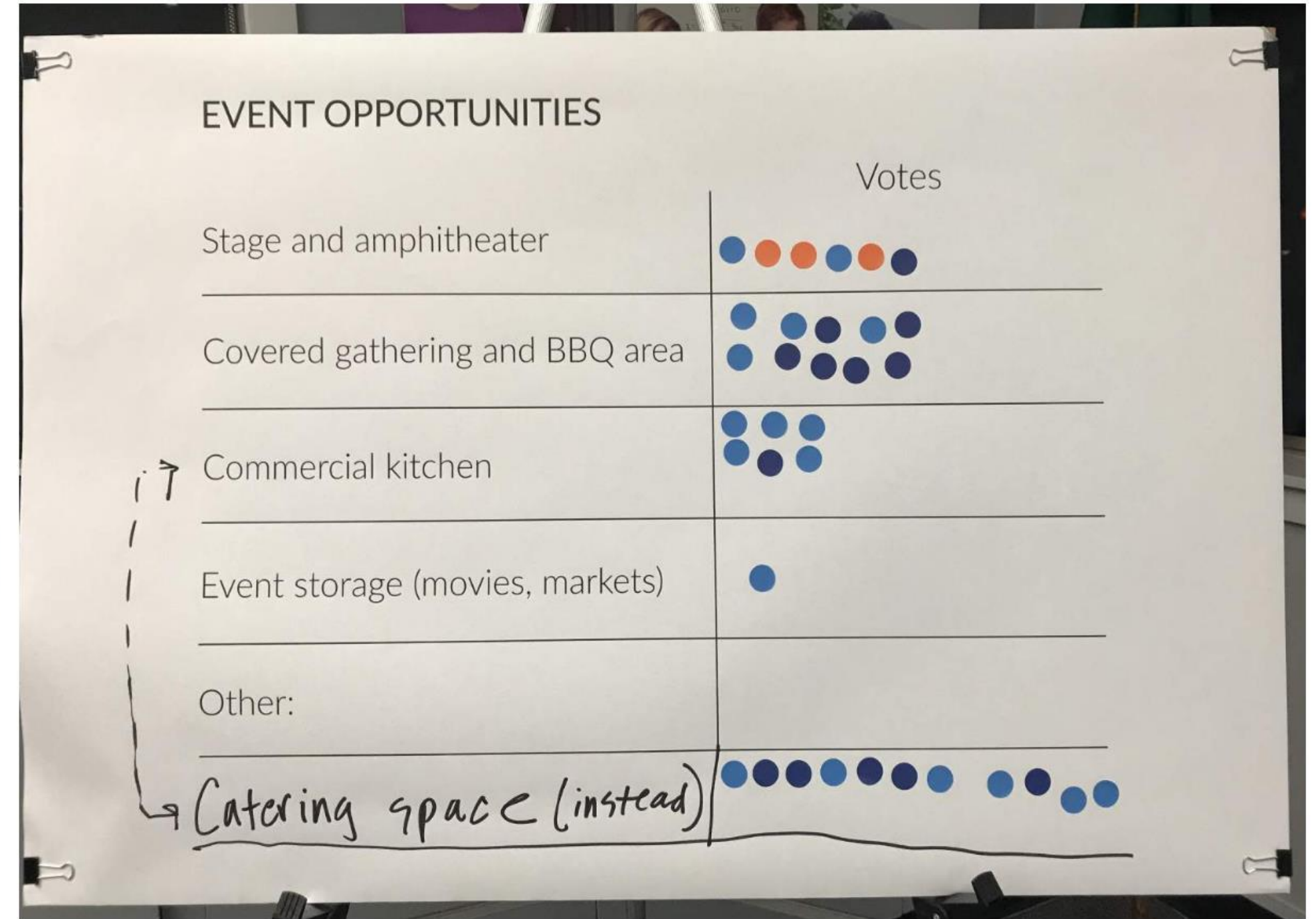
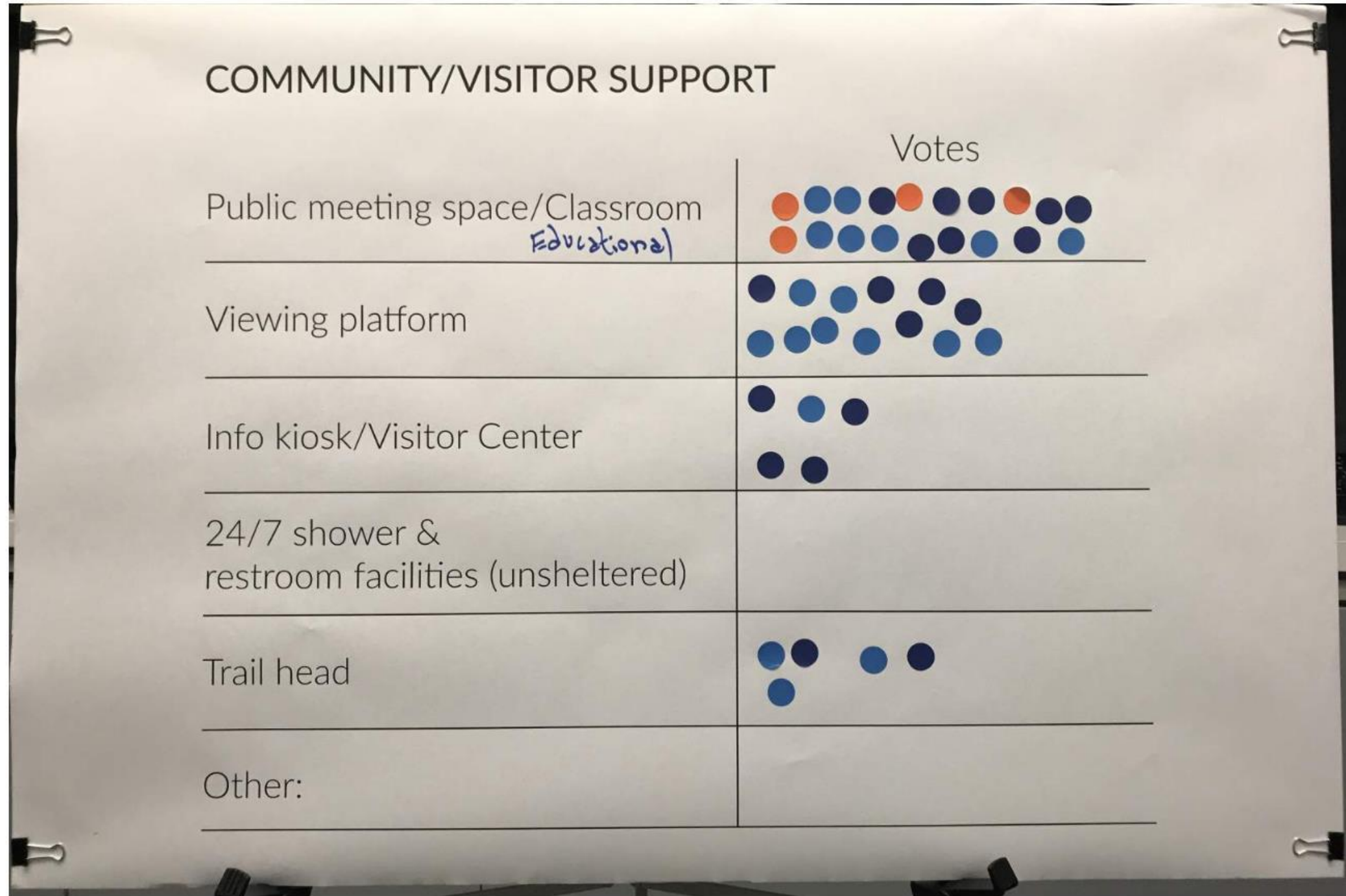


4. Are there any conflicts or concerns to be aware of?



WORKSHOP 2 PROCESS

FEBRUARY 11, 2020



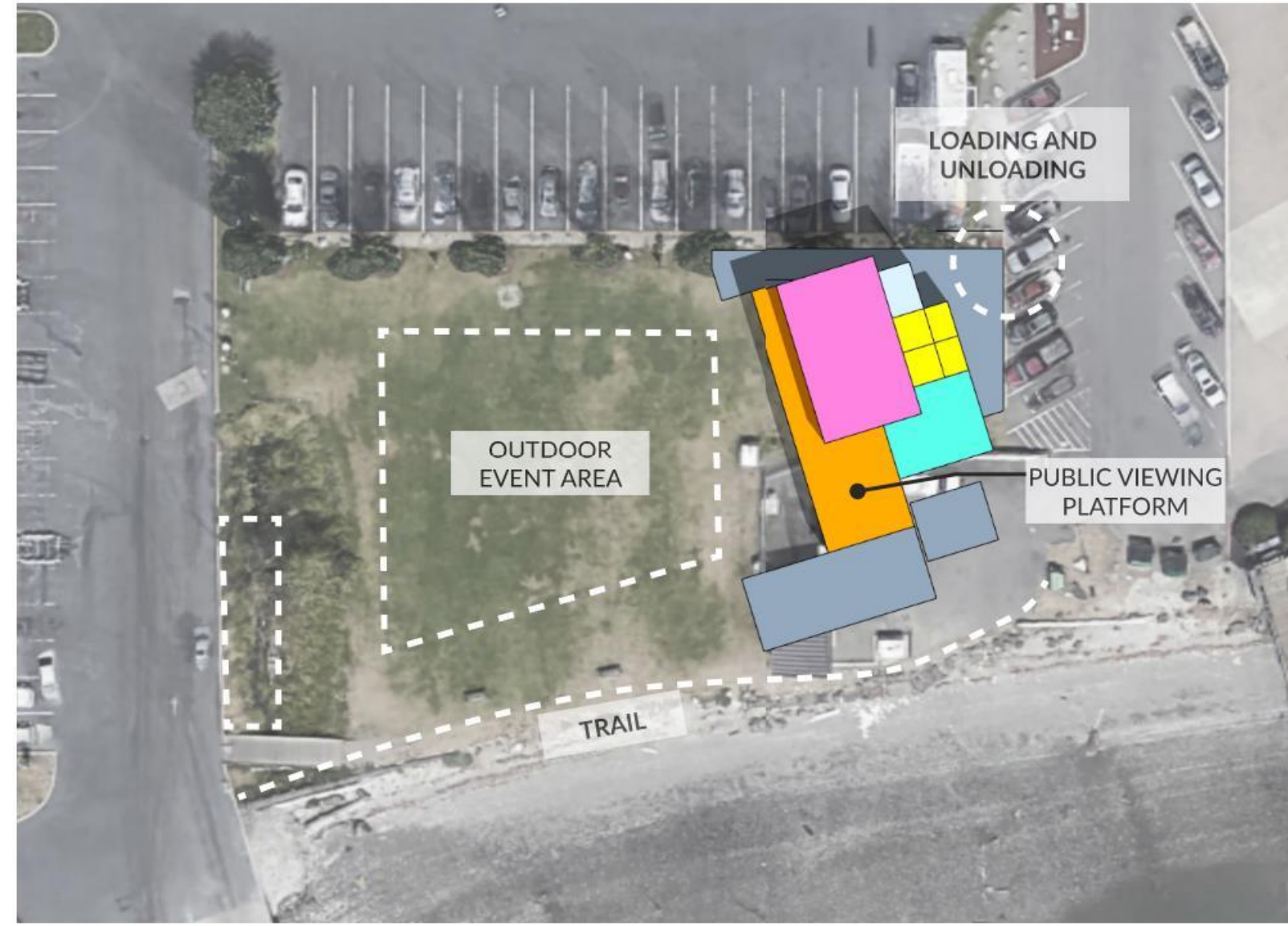
WORKSHOP 2 VOTE TALLY

PUBLISHED WITH MEETING MINUTES

Category	Orange Dots	Blue Dots	Total Votes
1 Sailing	6	18	36
2 Shell rowing	5	17	32
3 Public meeting space/Classroom educational	4	15	27
4 Viewing platform	0	13	13
5 Stage and amphitheater	3	3	12
6 Catering Space	0	11	11
7 Covered gathering and BBQ area	0	10	10
8 Human-powered watercraft rental	1	7	10
9 Retail space	1	6	9
10 Commercial kitchen	0	6	6
11 Port offices	0	6	6
12 Info kiosk/Visitor Center	0	5	5
13 Trail head	0	5	5
14 Parking	1	1	4
15 Event storage (movies, markets)	0	1	1
16 Personal reflection/meditation center	0	1	1
17 Private shower & restroom	0	1	1
18 24/7 shower & restroom facilities (unsheltered)	0	0	0

A

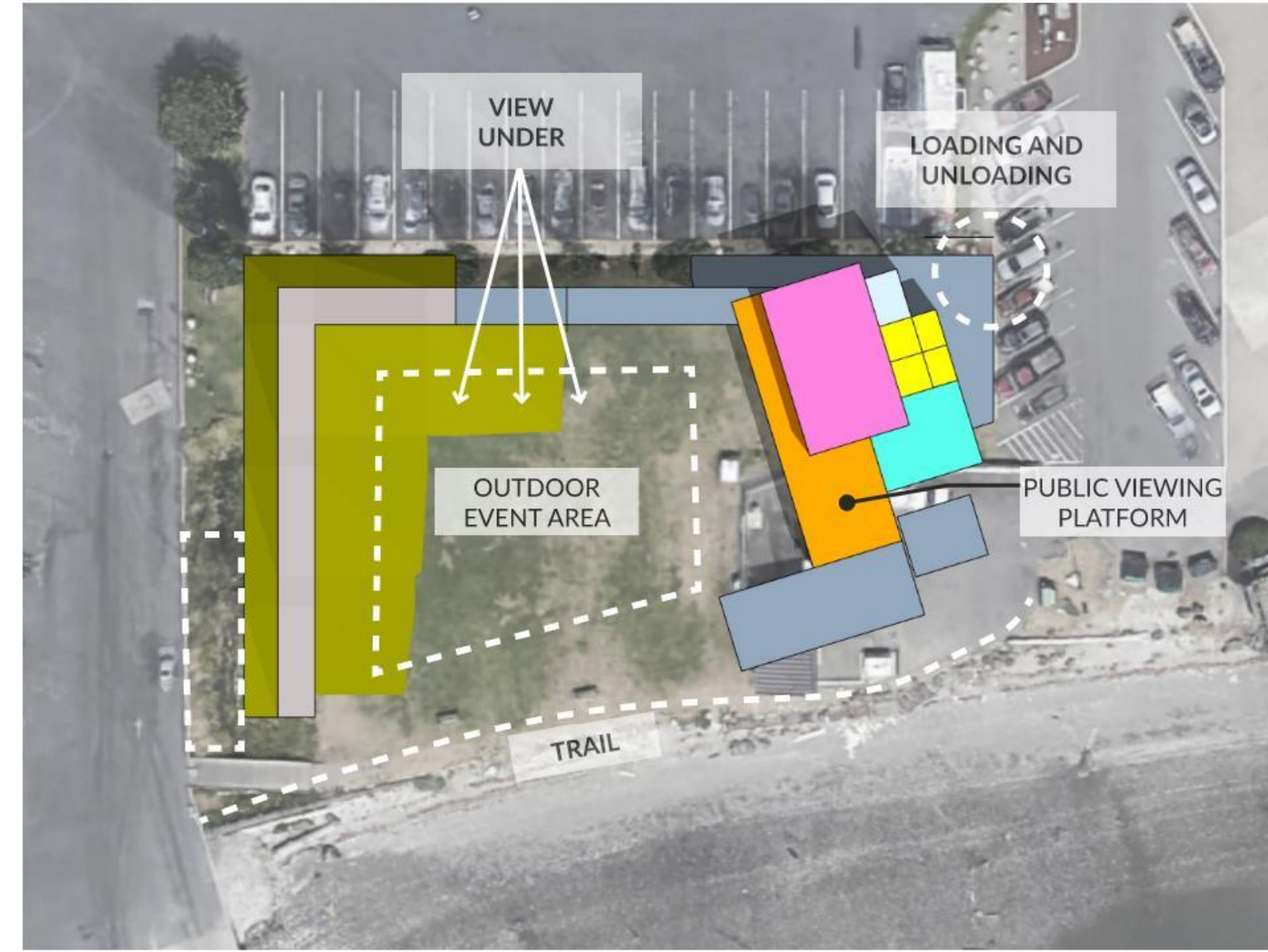
2-STORY WITH ELEVATOR



SITE PLAN

B

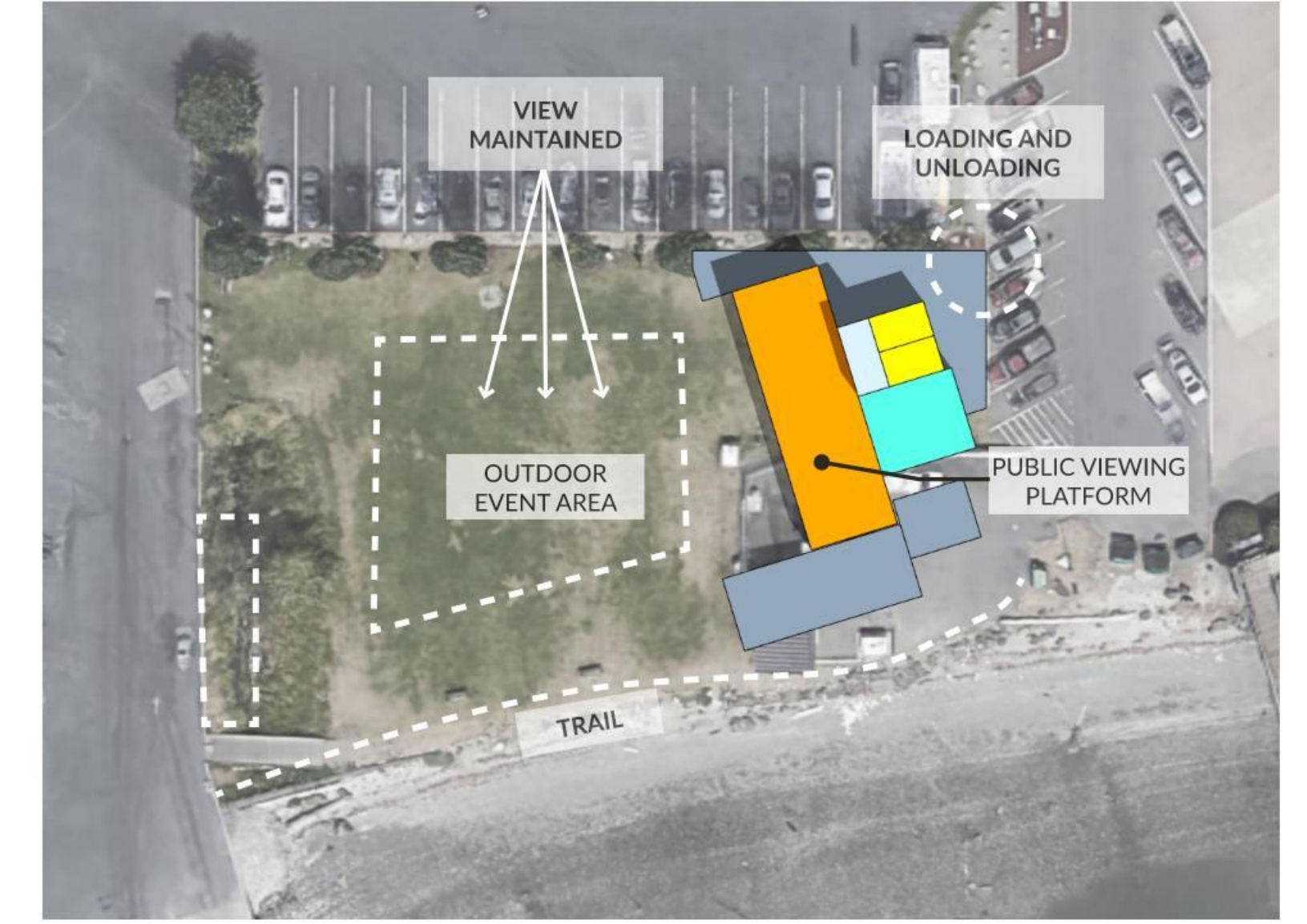
2-STORY WITH ACCESSIBLE ROUTE



SITE PLAN

C

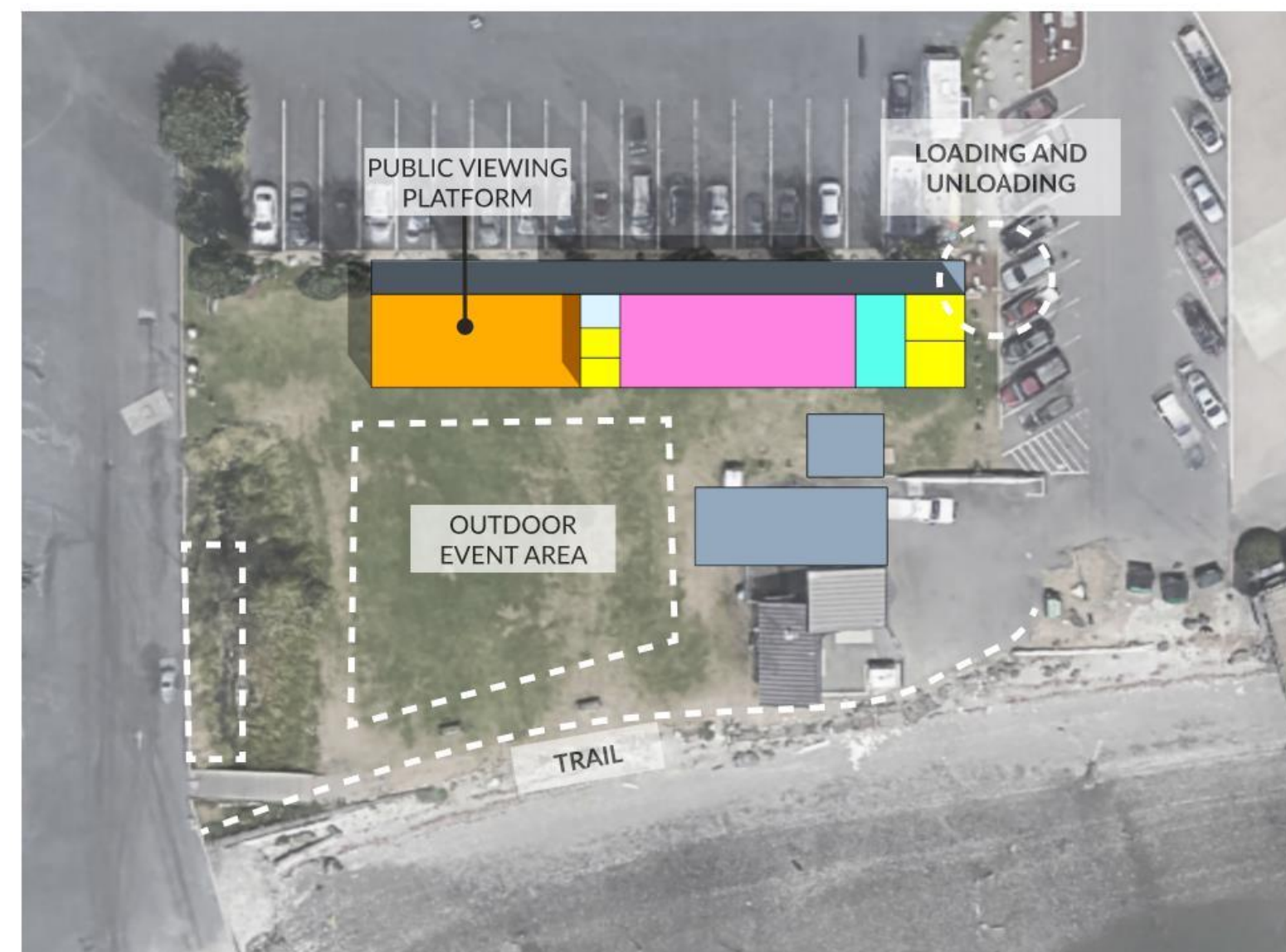
1-STORY MINIMAL PROGRAM



SITE PLAN

D

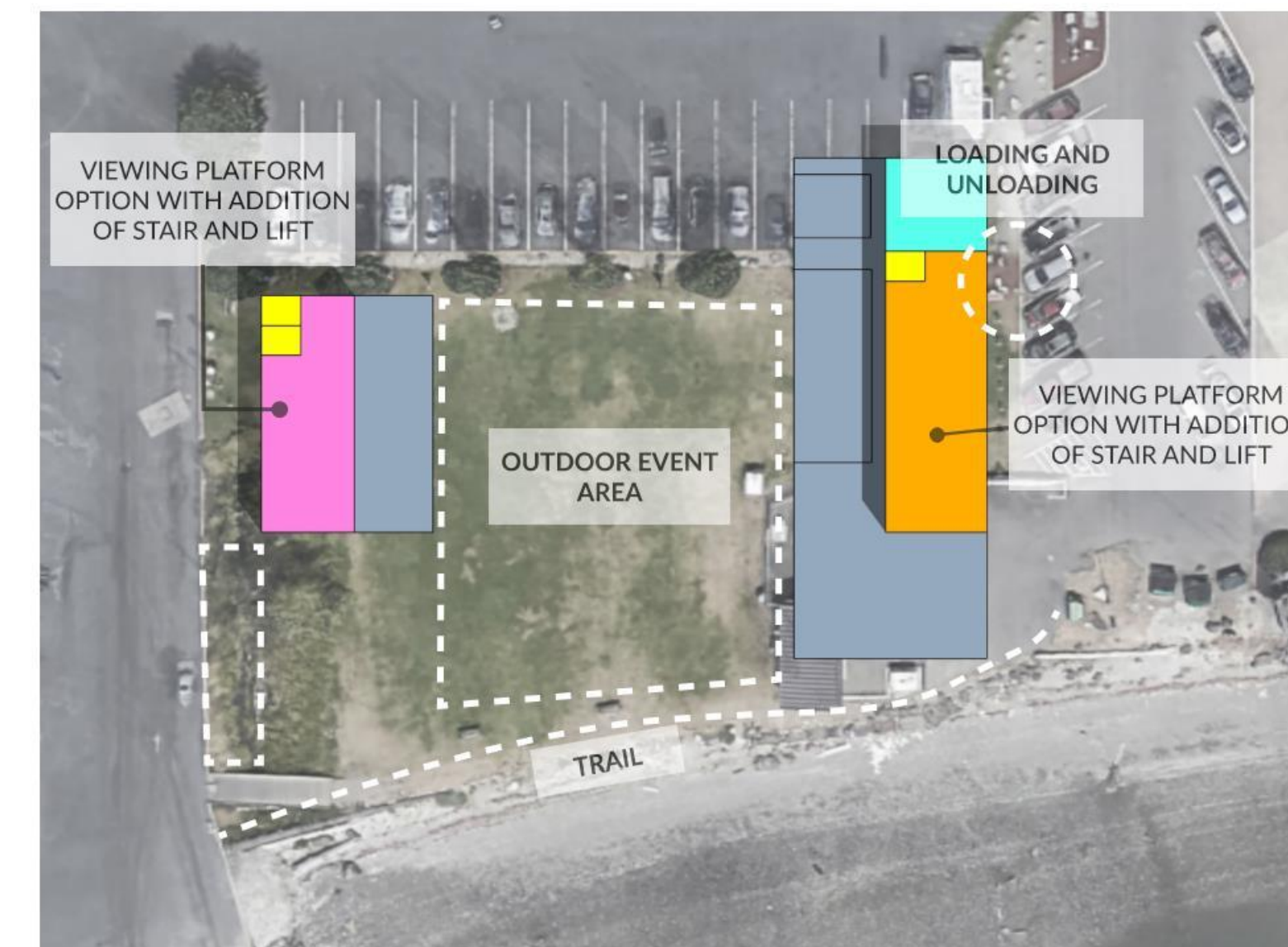
2-STORY EAST-WEST



SITE PLAN

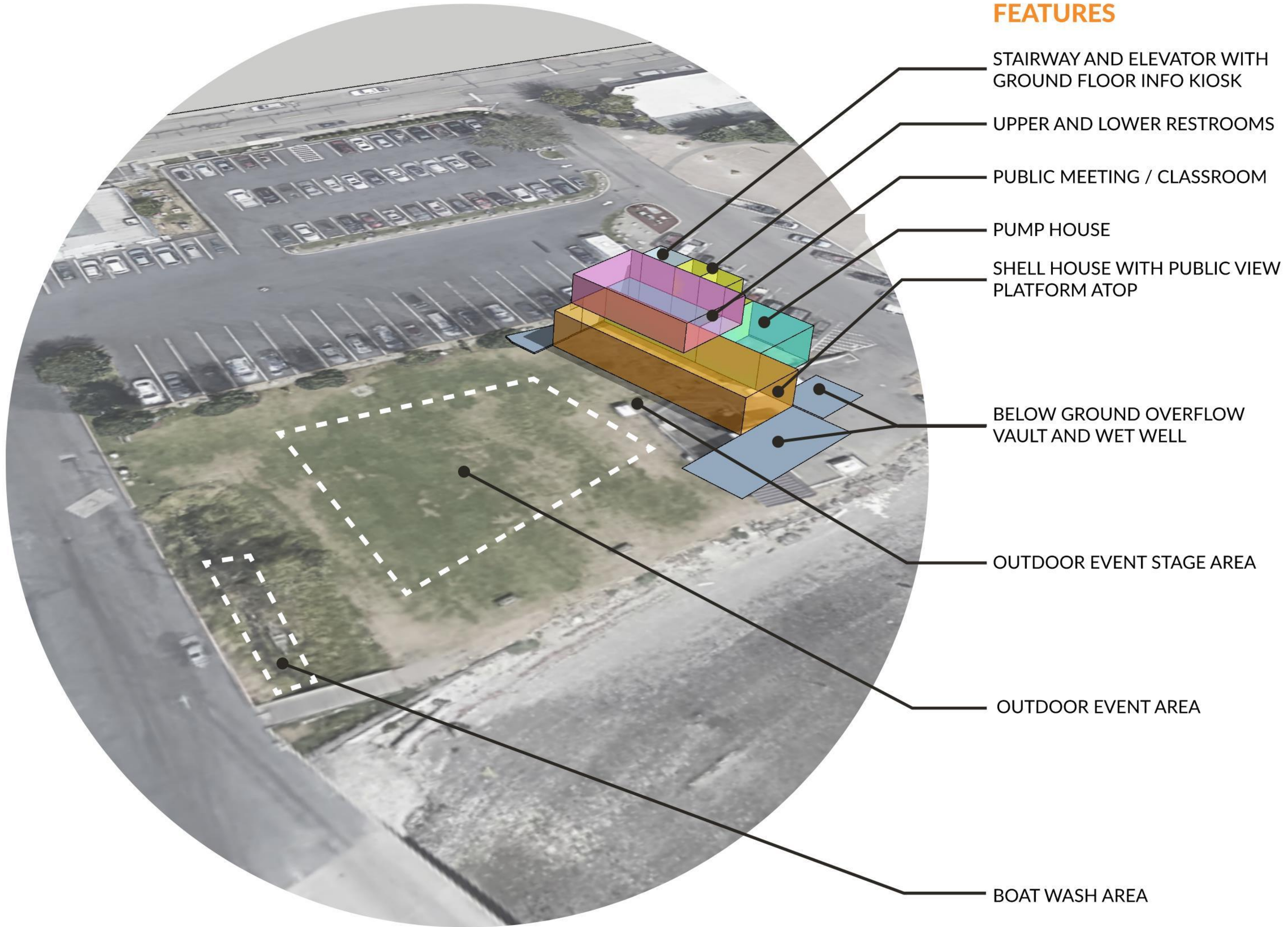
E

2 BUILDINGS WITH WIDE OPEN MIDDLE

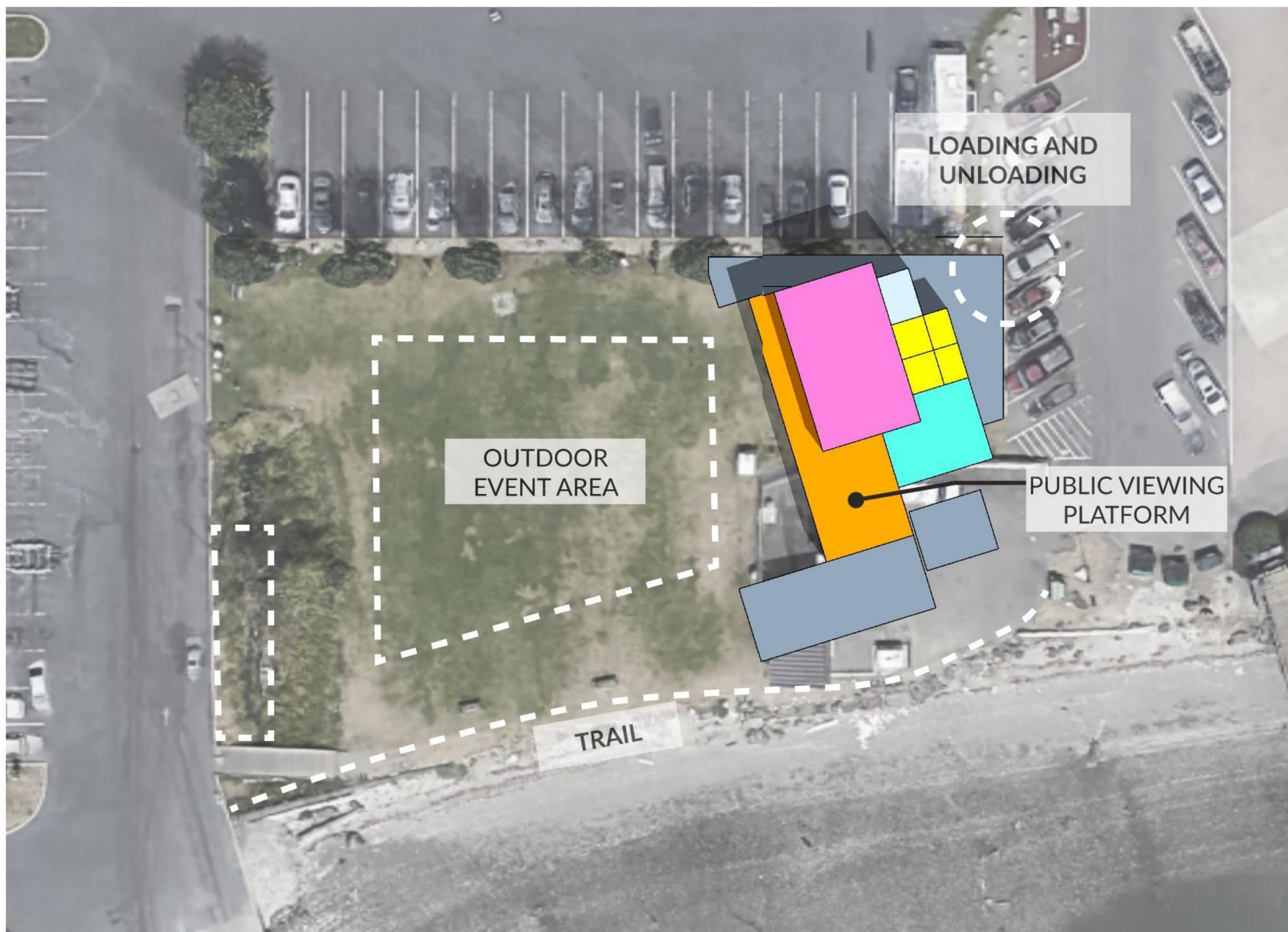


SITE PLAN

A



2-STORY WITH ELEVATOR



CONCEPTUAL PROGRAM AREAS

LOWER FLOOR

SHELL HOUSE	1875 SF
PUMP HOUSE	630 SF
REST ROOMS	320 SF
STAIRWAY	120 SF
SAIL STORAGE LOFT	420 SF
INFO KIOSK	60 SF

TOTAL 3425 SF

UPPER FLOOR

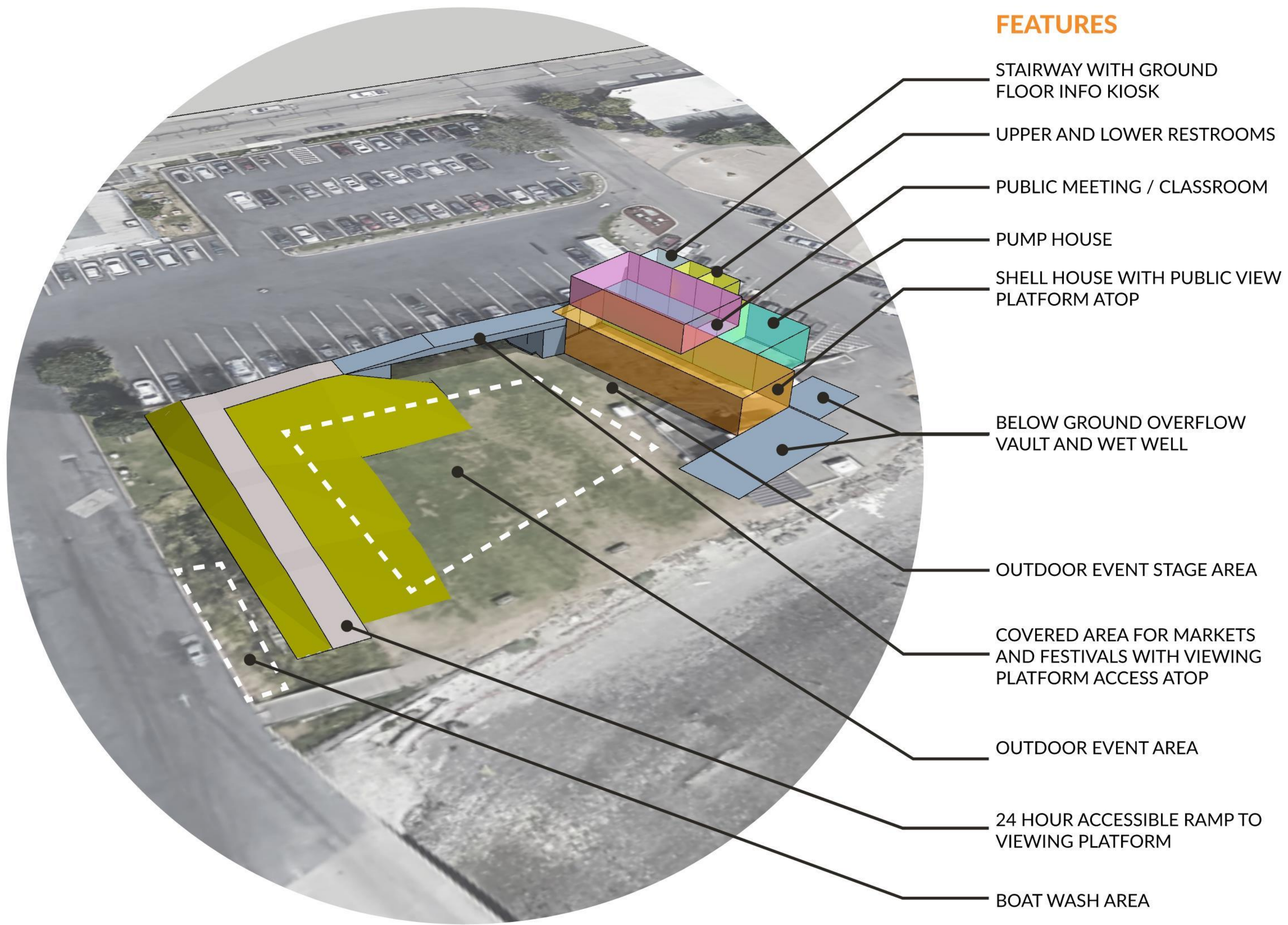
PUBLIC MEETING	1290 SF
REST ROOMS	180 SF
VIEWING PLATFORM	1100 SF
STAIRWAY	120 SF

TOTAL 2690 SF

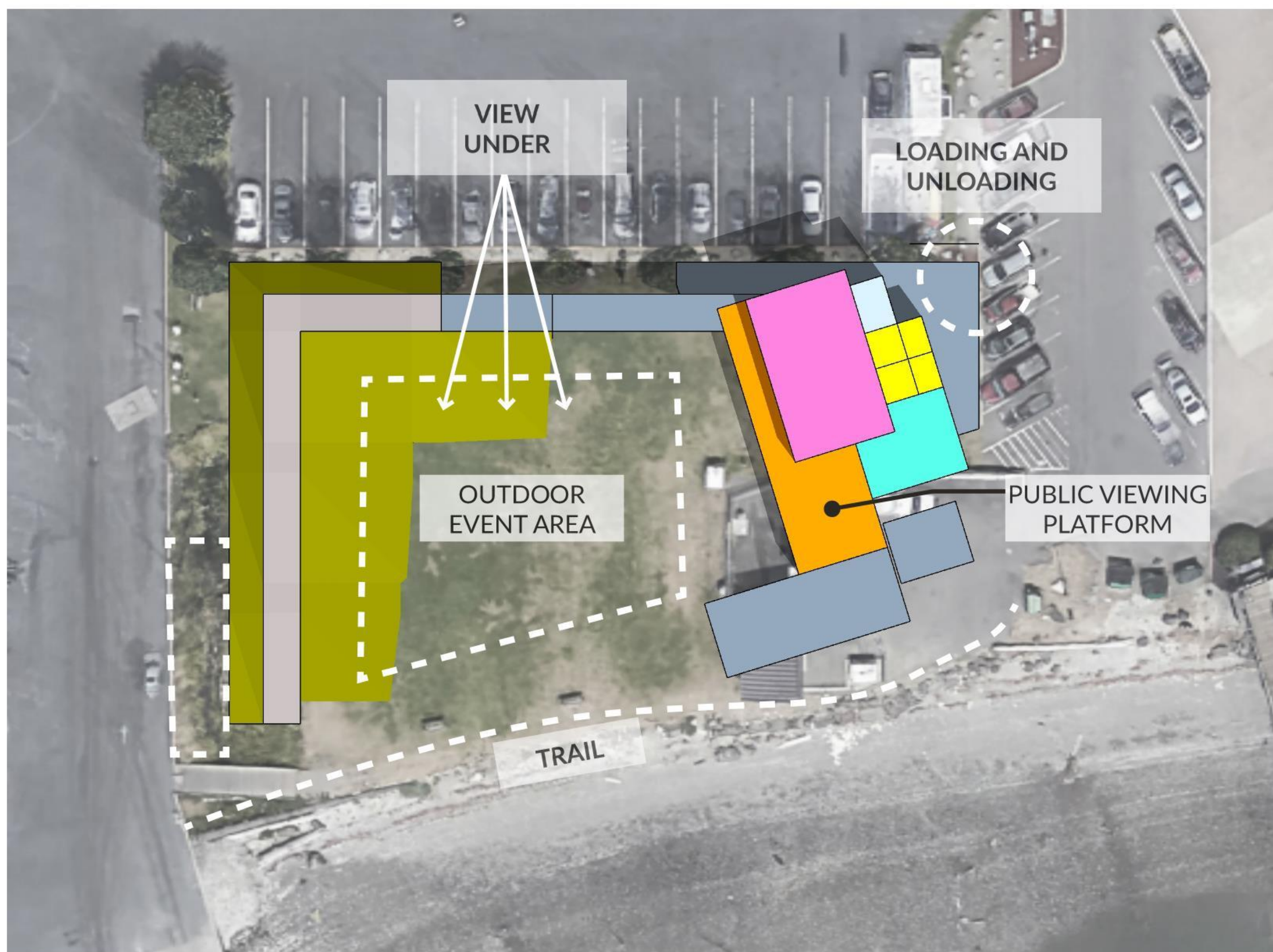
BUILDING TOTAL 6115 SF

SITE PLAN

B



2-STORY WITH ACCESSIBLE ROUTE



SITE PLAN

CONCEPTUAL PROGRAM AREAS

LOWER FLOOR

SHELL HOUSE	1875 SF
PUMP HOUSE	630 SF
REST ROOMS	320 SF
STAIRWAY	120 SF
SAIL STORAGE LOFT	420 SF
INFO KIOSK	60 SF

TOTAL 3425 SF

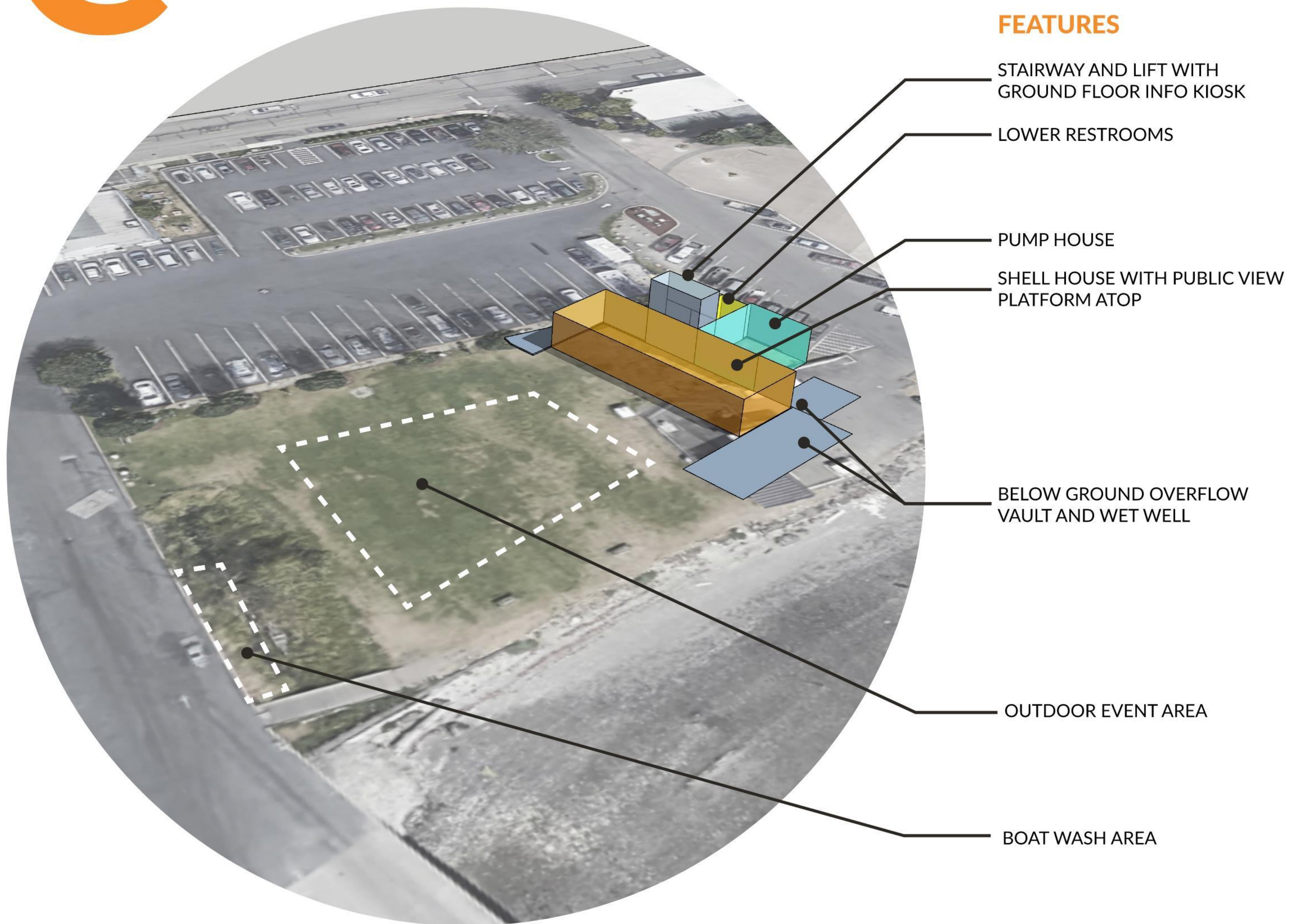
UPPER FLOOR

PUBLIC MEETING	1290 SF
REST ROOMS	180 SF
VIEWING PLATFORM	1100 SF
STAIRWAY	120 SF

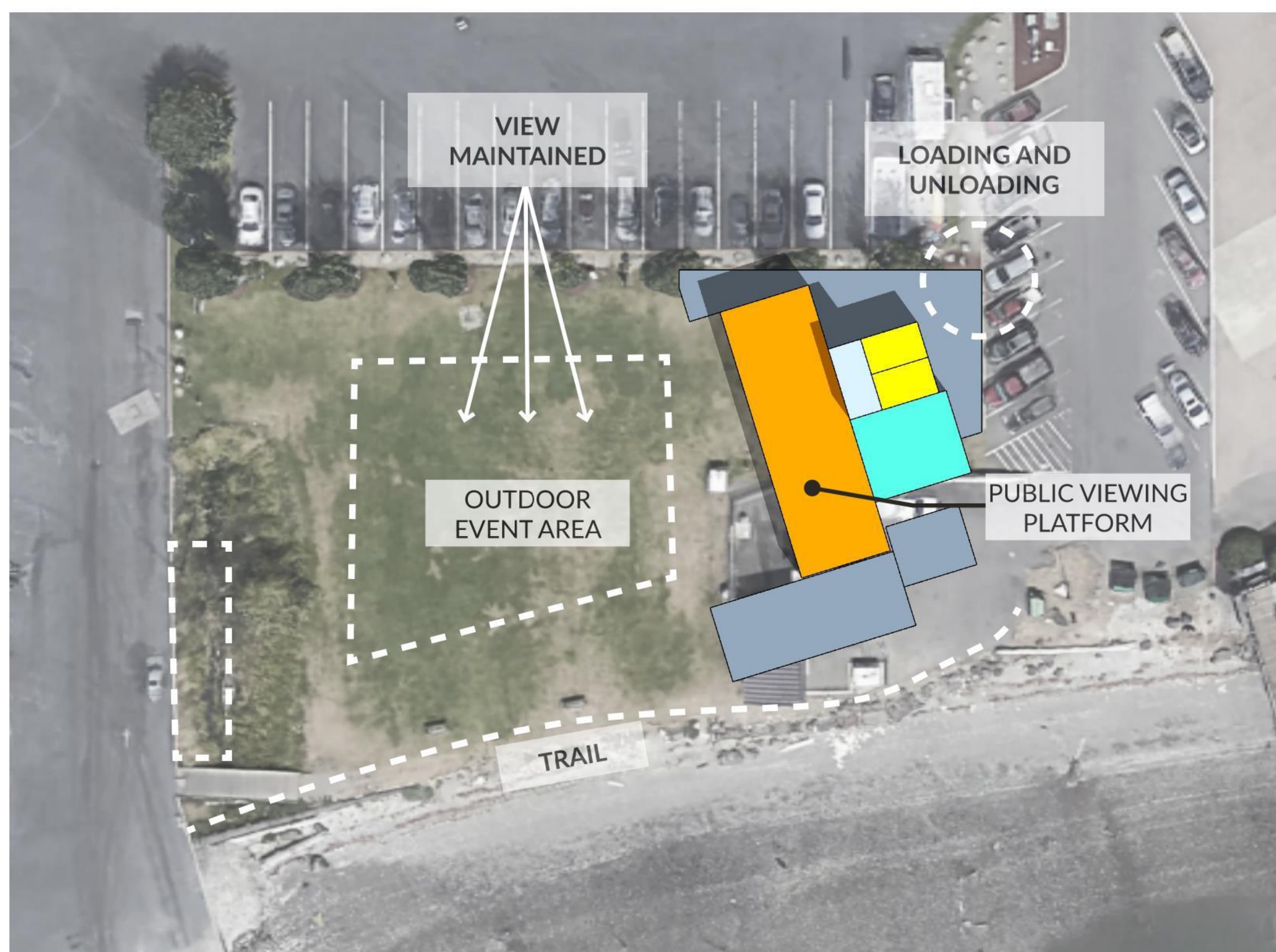
TOTAL 2690 SF

BUILDING TOTAL 6115 SF

C



1-STORY MINIMAL PROGRAM



SITE PLAN

CONCEPTUAL PROGRAM AREAS

LOWER FLOOR

SHELL HOUSE	1875 SF
PUMP HOUSE	630 SF
REST ROOMS	320 SF
STAIRWAY / LIFT	120 SF

TOTAL 2945 SF

UPPER FLOOR

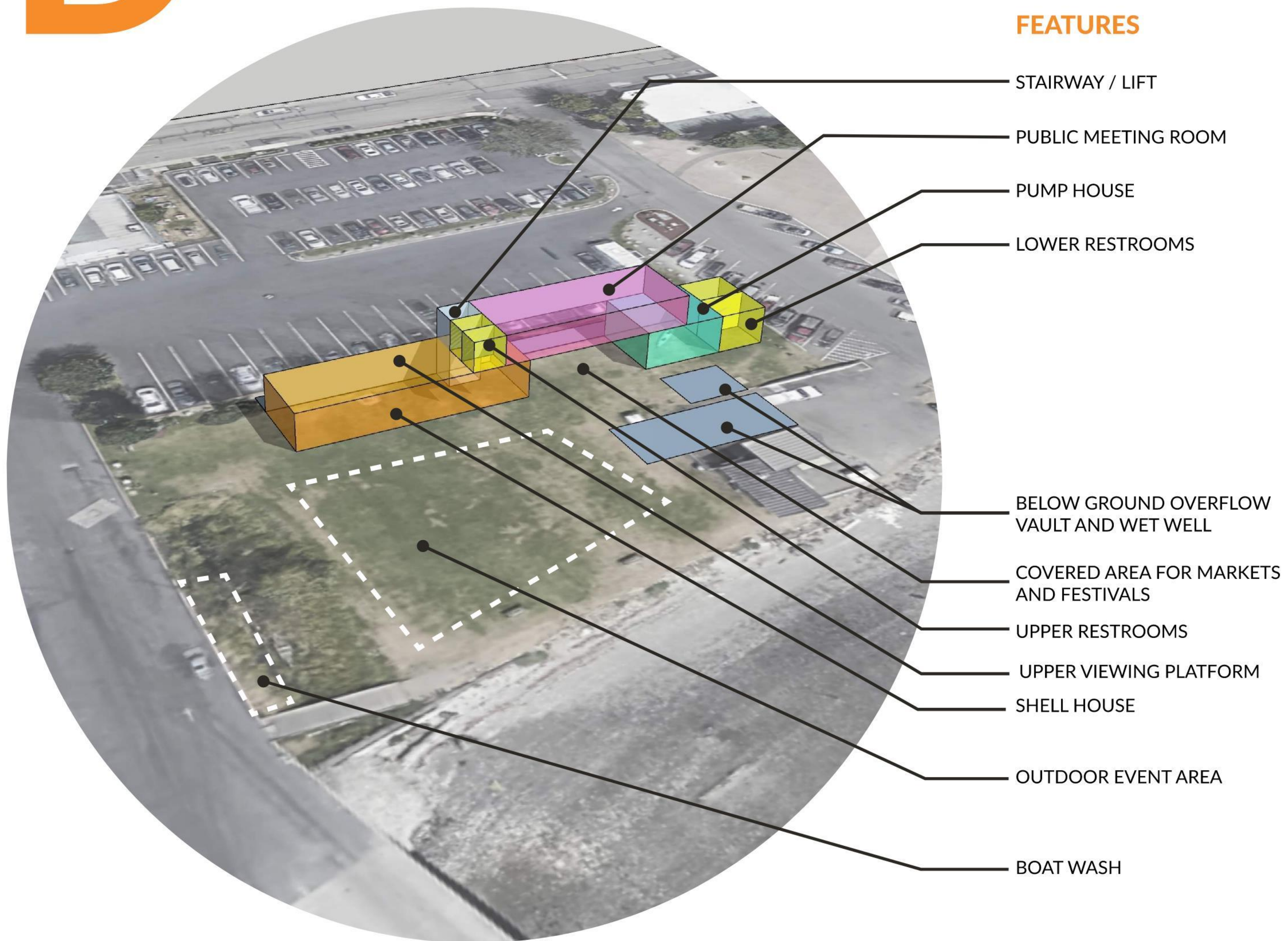
VIEWING PLATFORM	1100 SF
STAIRWAY / LIFT	120 SF

TOTAL 1220 SF

BUILDING TOTAL 4165 SF

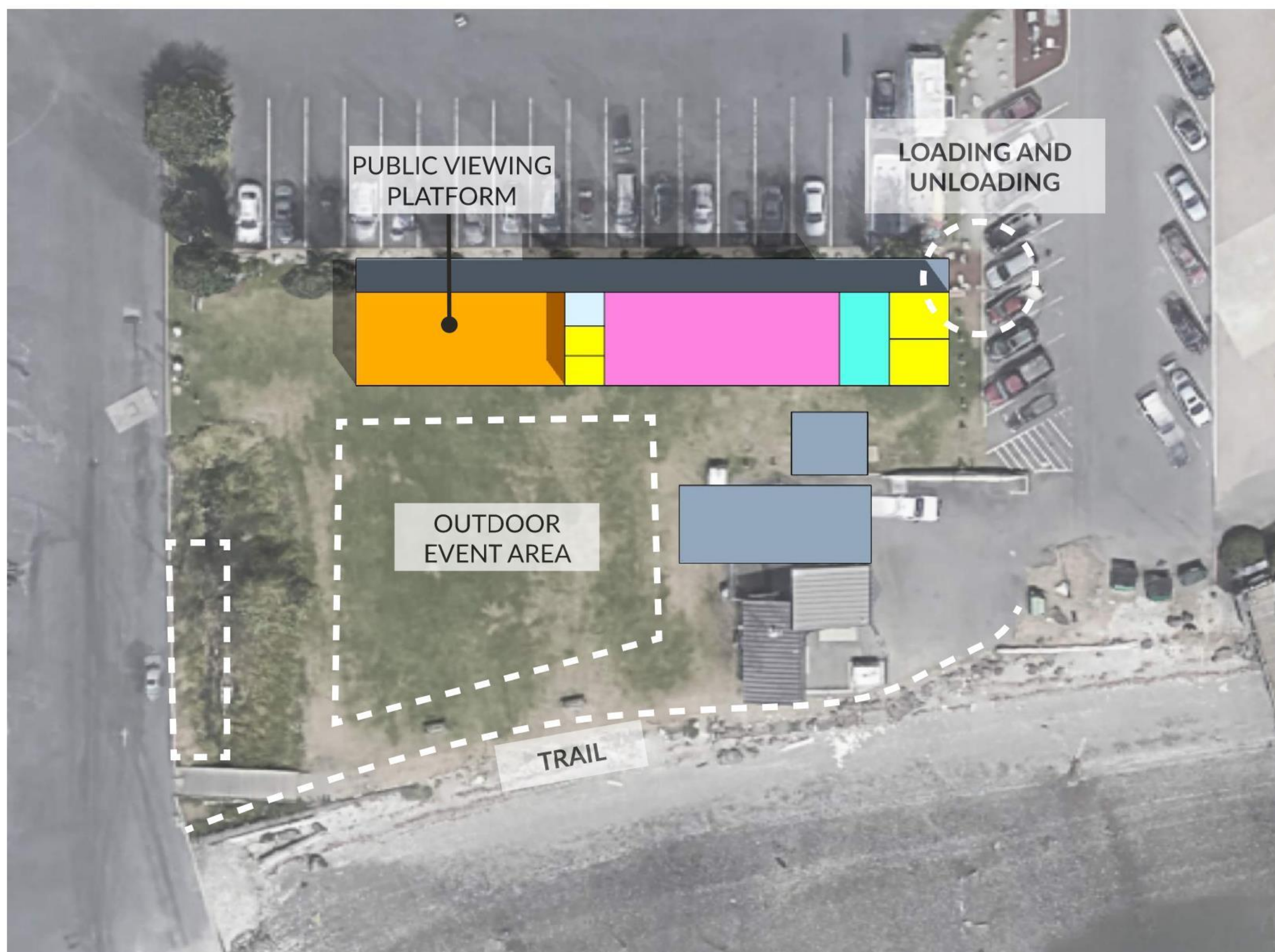
D

FEATURES



- STAIRWAY / LIFT
- PUBLIC MEETING ROOM
- PUMP HOUSE
- LOWER RESTROOMS
- BELOW GROUND OVERFLOW VAULT AND WET WELL
- COVERED AREA FOR MARKETS AND FESTIVALS
- UPPER RESTROOMS
- UPPER VIEWING PLATFORM
- SHELL HOUSE
- OUTDOOR EVENT AREA
- BOAT WASH

2-STORY EAST-WEST



CONCEPTUAL PROGRAM AREAS

LOWER FLOOR

SHELL HOUSE	1875 SF
PUMP HOUSE	630 SF
REST ROOMS	320 SF
STAIRWAY / LIFT	120 SF

TOTAL 2945 SF

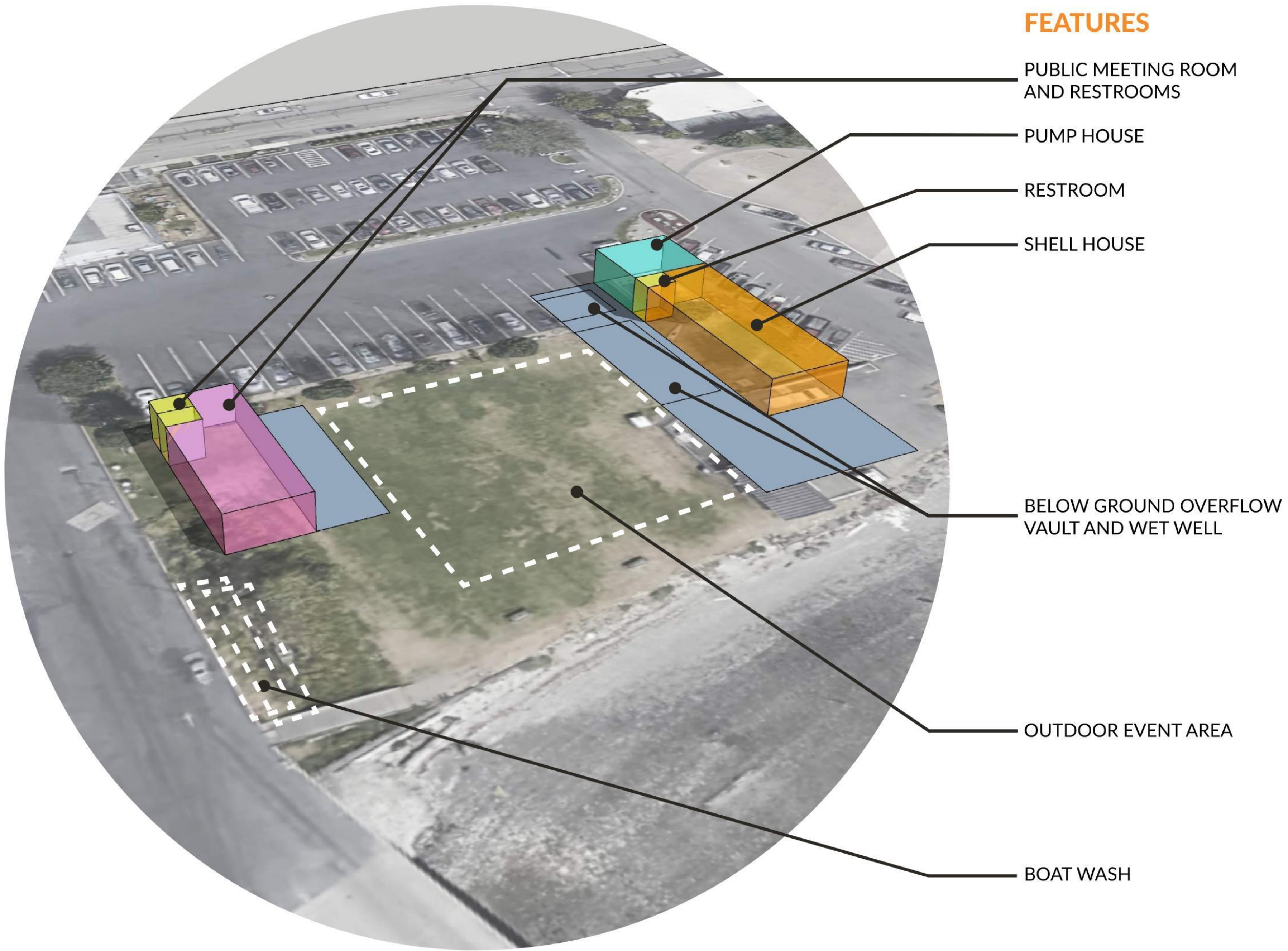
UPPER FLOOR

PUBLIC MEETING	1290 SF
REST ROOMS	180 SF
VIEWING PLATFORM	1100 SF
STAIRWAY / LIFT	120 SF
TOTAL 2690 SF	

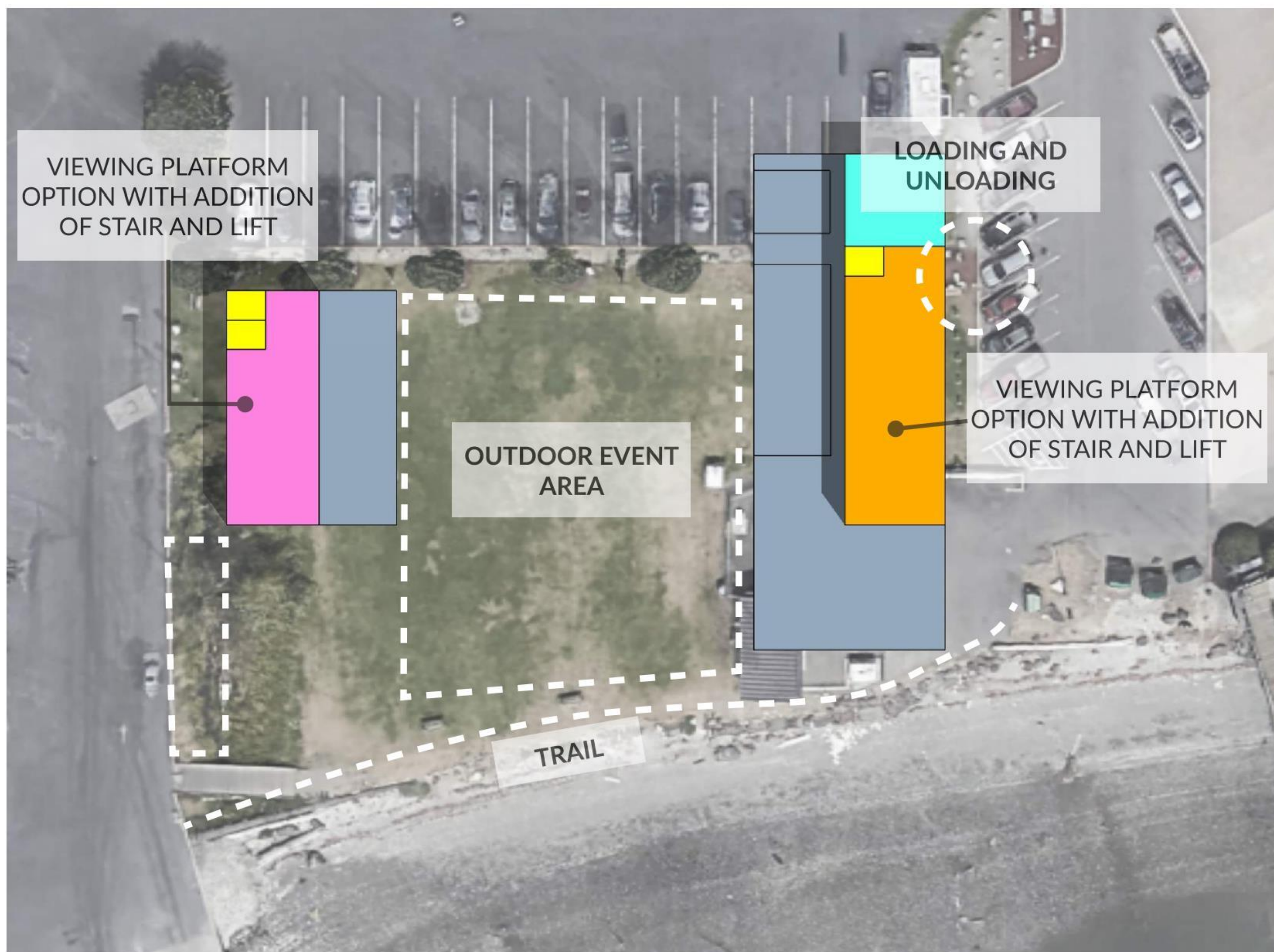
BUILDING TOTAL 5635 SF

SITE PLAN

E



2 BUILDINGS WITH WIDE OPEN MIDDLE



SITE PLAN

FEATURES

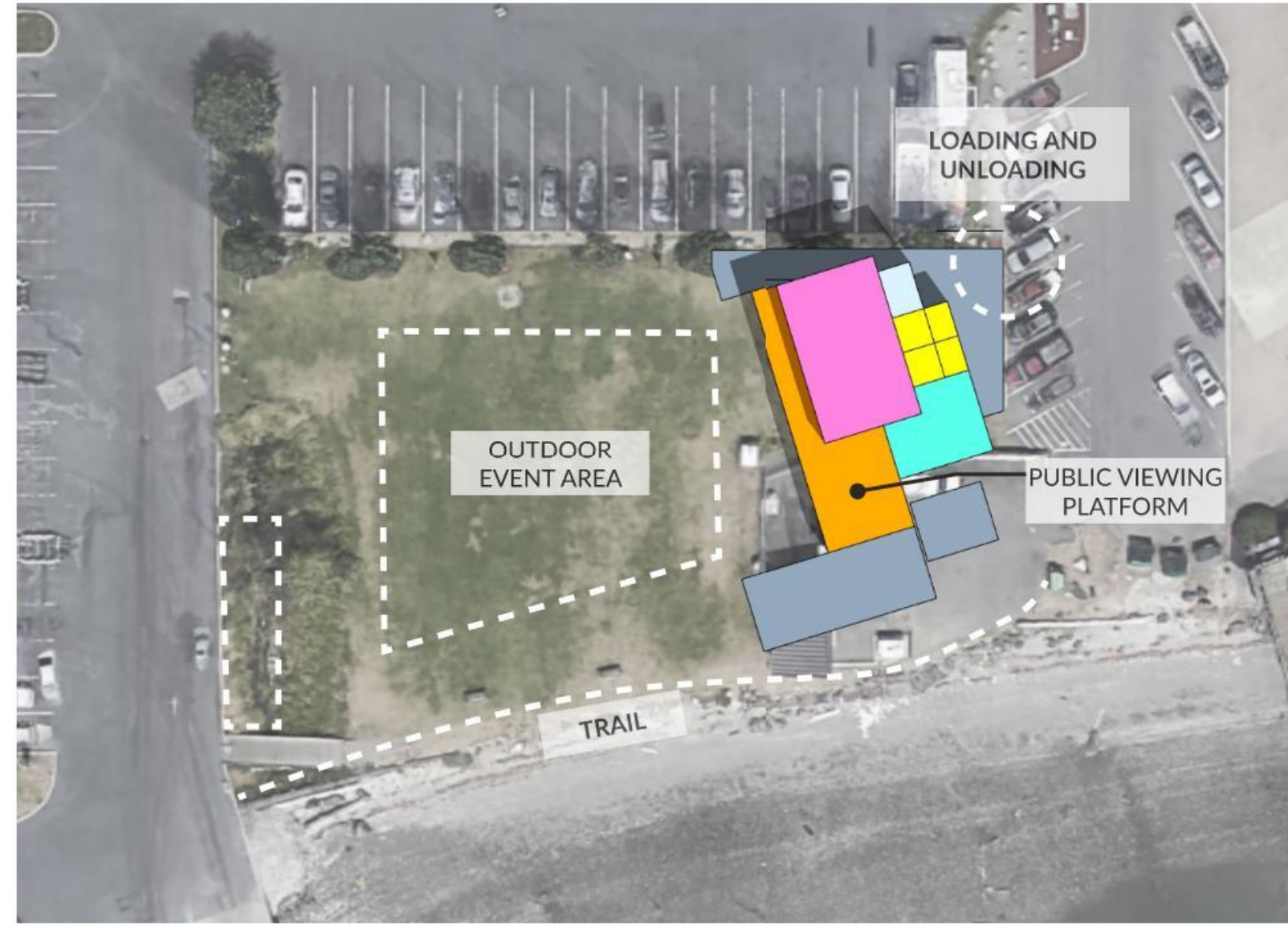
- PUBLIC MEETING ROOM AND RESTROOMS
- PUMP HOUSE
- RESTROOM
- SHELL HOUSE
- BELOW GROUND OVERFLOW VAULT AND WET WELL
- OUTDOOR EVENT AREA
- BOAT WASH

CONCEPTUAL PROGRAM AREAS

SHELL/PUMP HOUSE	
SHELL HOUSE	1875 SF
PUMP HOUSE	630 SF
REST ROOMS	160 SF
TOTAL 2665 SF	
MEETING BUILDING	
PUBLIC MEETING	1290 SF
REST ROOMS	180 SF
TOTAL 1470 SF	
BUILDING TOTAL 4135 SF	

A

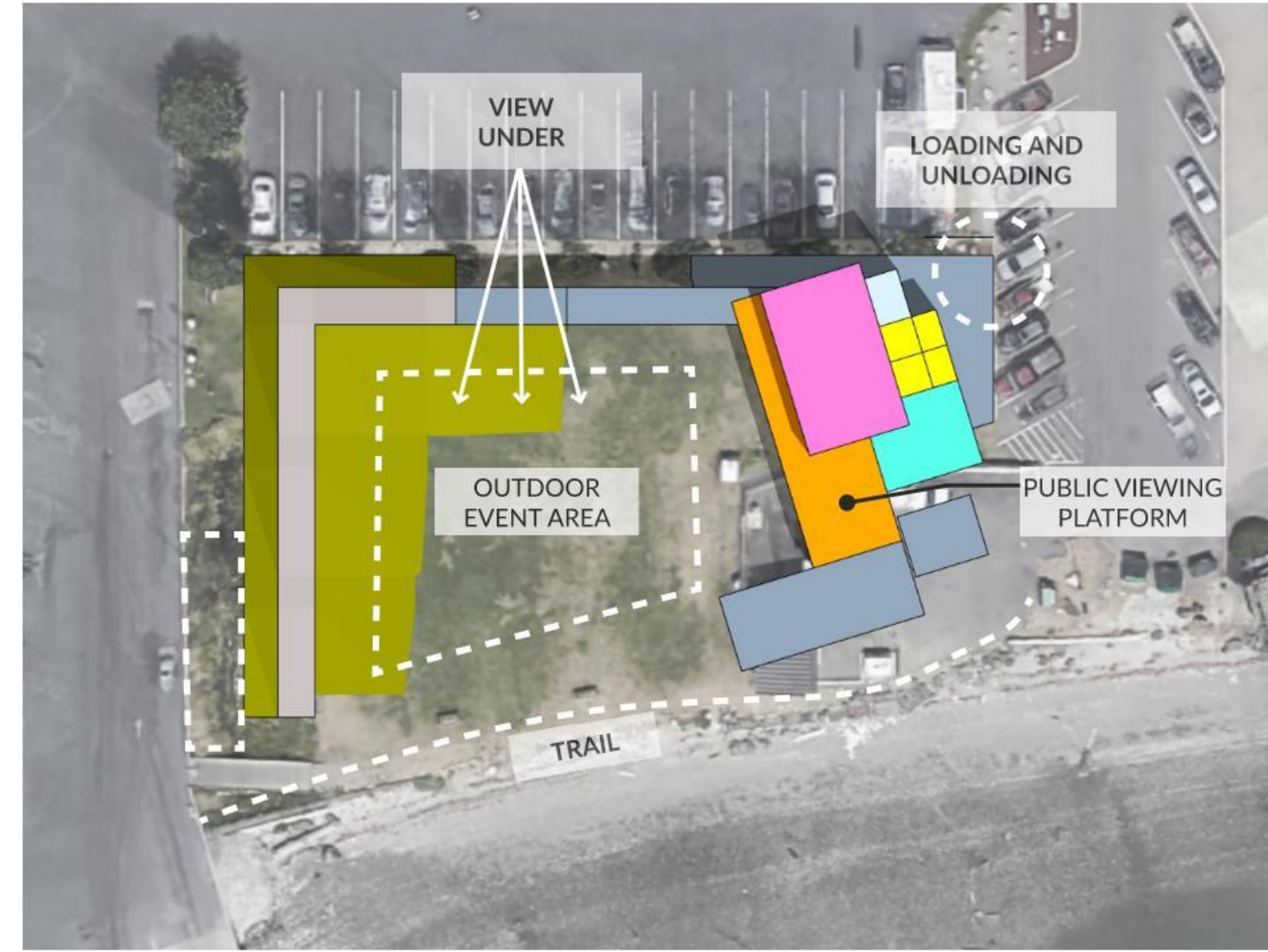
2-STORY WITH ELEVATOR



SITE PLAN

B

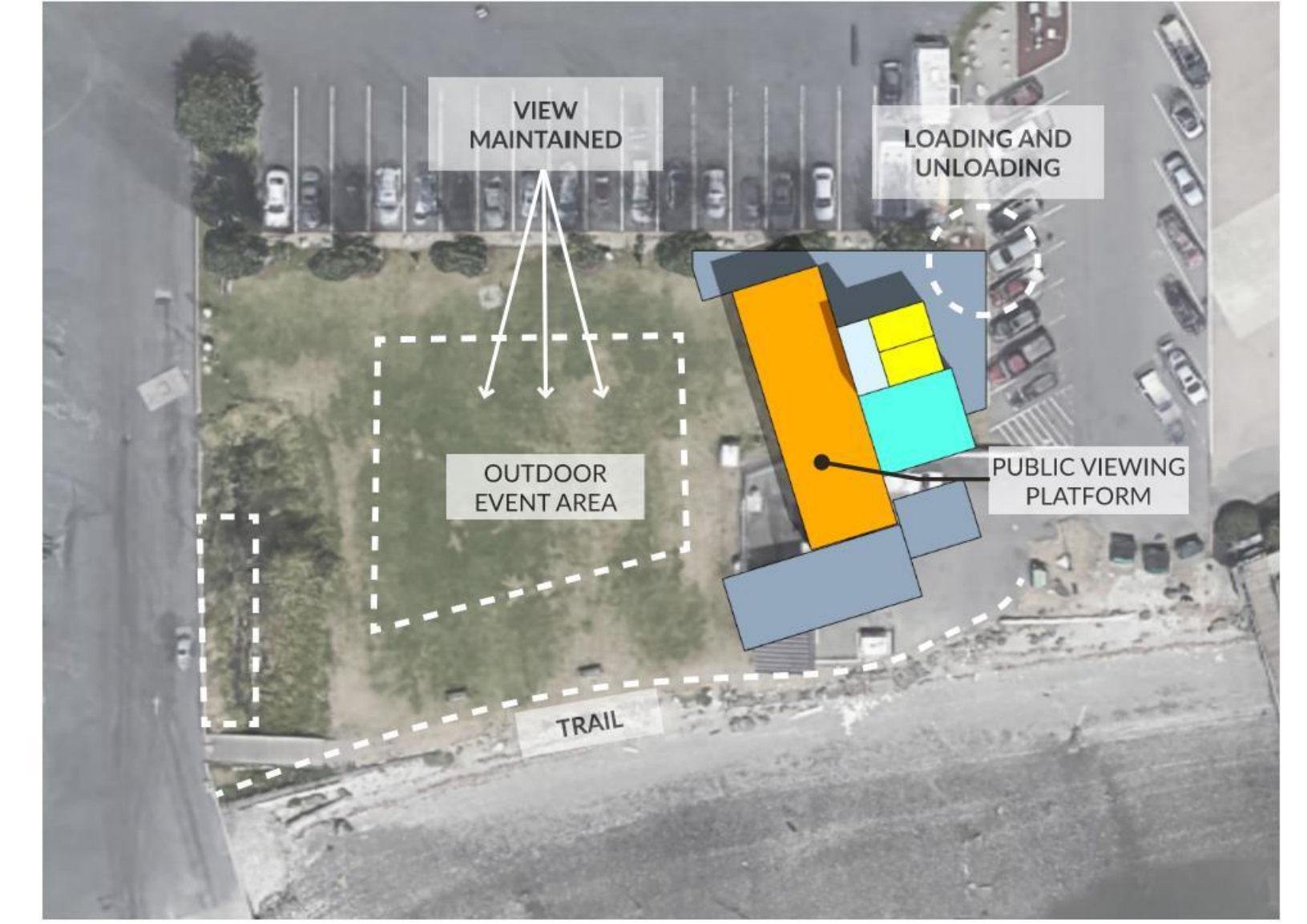
2-STORY WITH ACCESSIBLE ROUTE



SITE PLAN

C

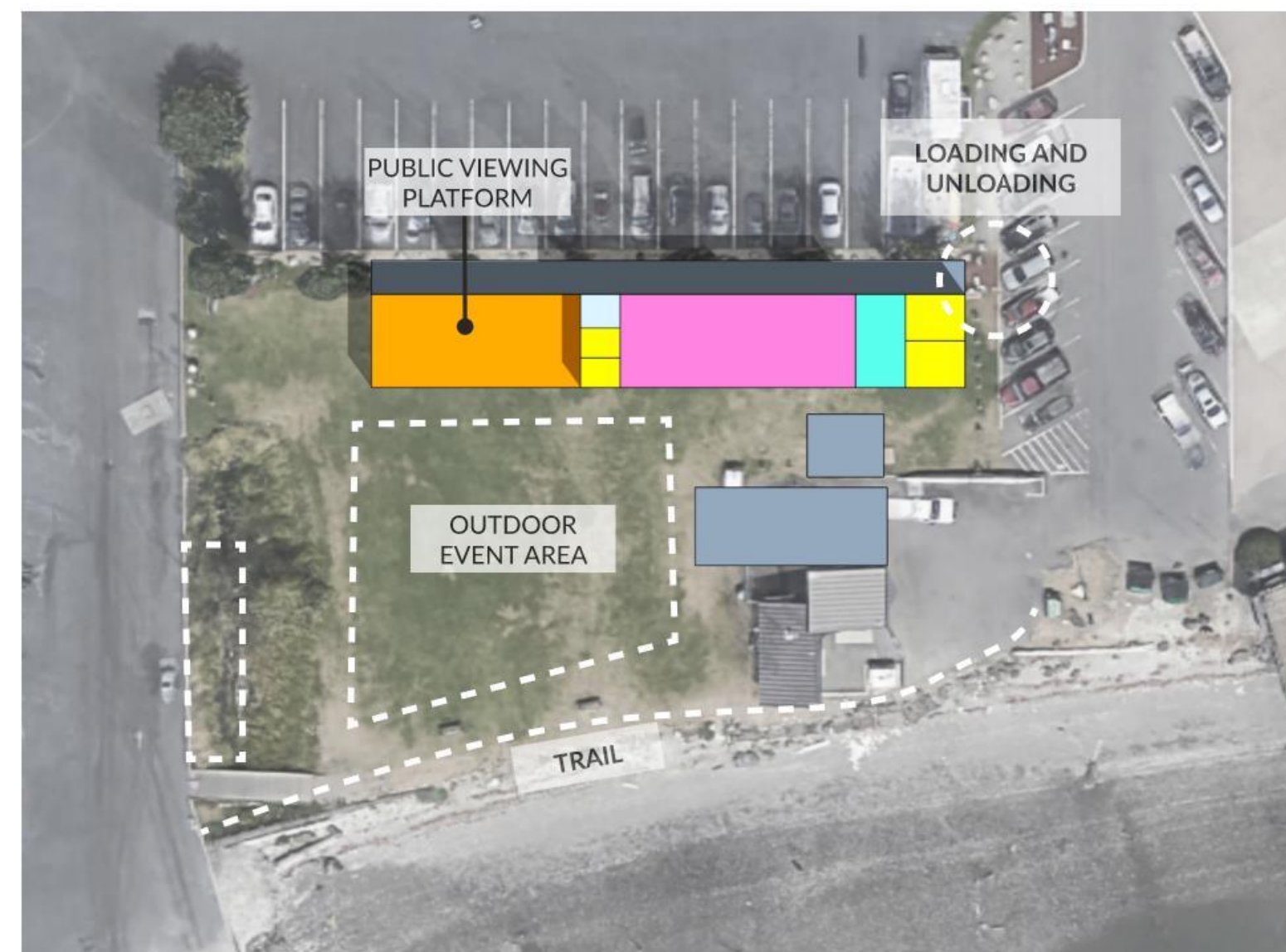
1-STORY MINIMAL PROGRAM



SITE PLAN

D

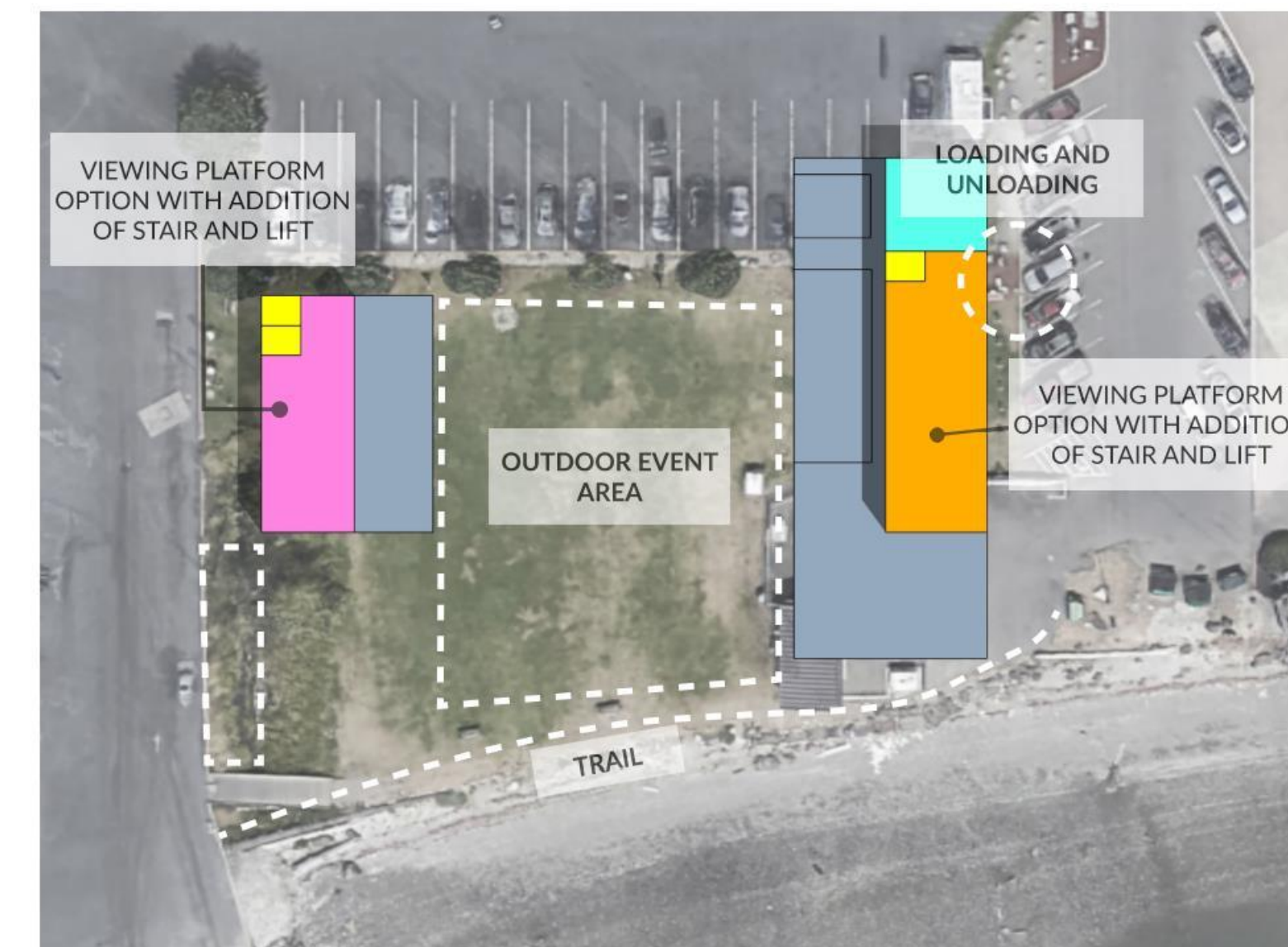
2-STORY EAST-WEST



SITE PLAN

E

2 BUILDINGS WITH WIDE OPEN MIDDLE



SITE PLAN