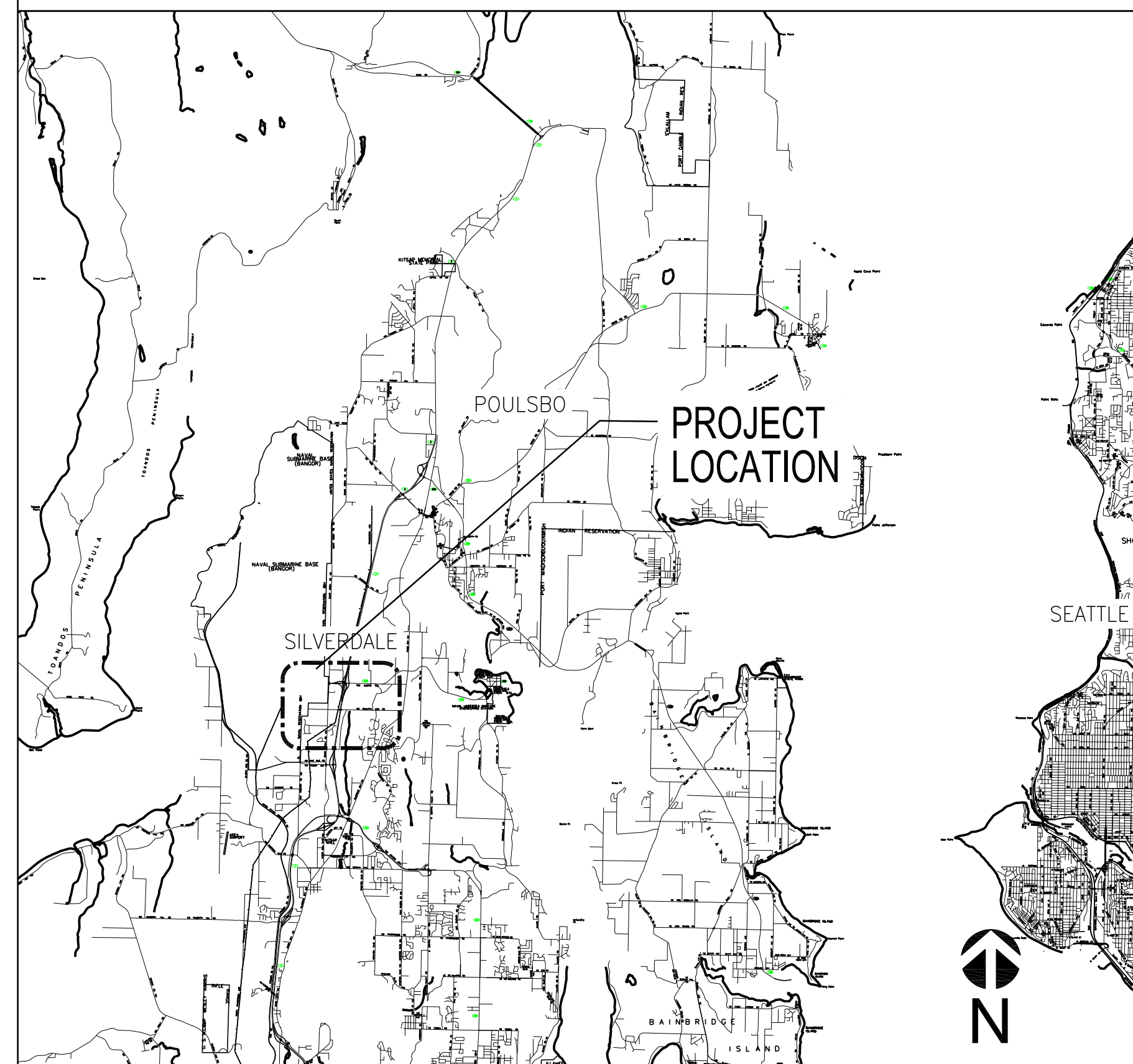




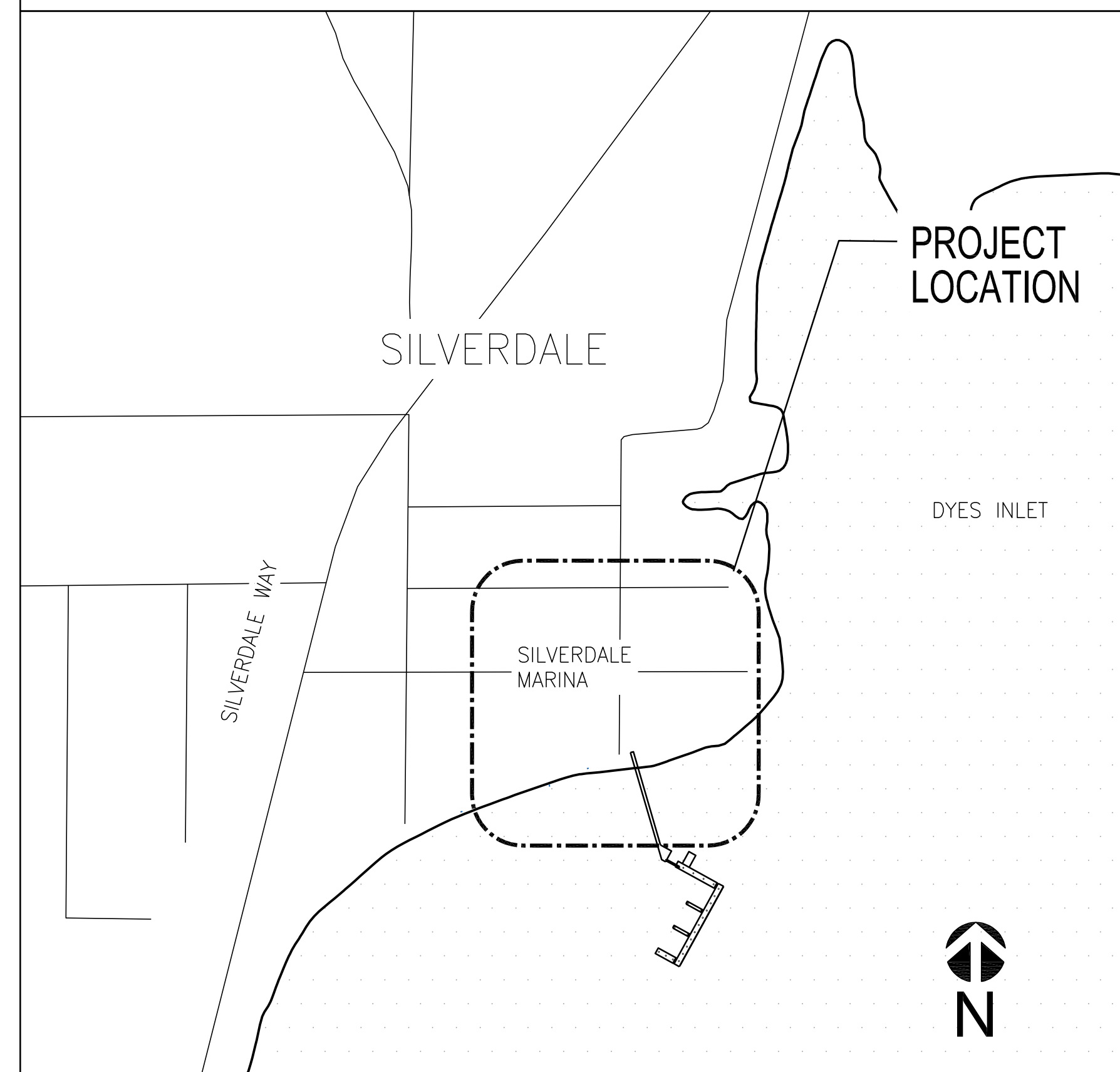
PORT OF SILVERDALE NON-MOTORIZED FLOAT DESIGN

P.O. BOX 310
SILVERDALE, WASHINGTON 98383

VICINITY MAP



LOCATION MAP



PROJECT TEAM

CONSTRUCTION CONTRACTOR:

DESIGN ENGINEER:

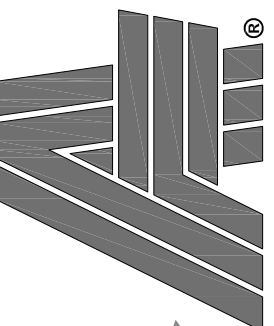
ART ANDERSON
830 PACIFIC AVE
BREMERTON, WA 98337

60% SUBMITTAL

2022-AUG-17

SHEET IS 22x34 ANSI D
IF PRINTING 11x17 USE
50% SCALE FACTOR

**ART
ANDERSON**
830 PACIFIC AVE, BREMERTON, WA 98337
(360) 479-5600



**PRELIMINARY
NOT FOR CONSTRUCTION**

PORT OF SILVERDALE
NON-MOTORIZED FLOAT DESIGN
P.O. BOX 310
SILVERDALE, WASHINGTON 98383

DRAWN: JHL/MWM
DESIGNED: ADT
CHECKED: RBC

ISSUE DATE
17 AUG 2022

REVISIONS

JOB NO
FWPSI001.003

SHT TITLE
TITLE SHEET,
LOCATION MAPS, &
PROJECT TEAM

SHT NO 1 OF 9

G001

DRAWING INDEX

1. G001 TITLE SHEET, LOCATION MAPS, & PROJECT TEAM
2. G002 DRAWING INDEX, NOTES, ABBREVIATIONS, & LEGEND
3. S101 MARINA PLAN
4. S201 NON-MOTORIZED FLOAT OVERALL PLAN
5. S301 MARINA & GANGWAY SECTION, & ELEVATION
6. S501 GANGWAY DETAILS
7. S502 GANGWAY DETAILS
8. S503 FLOAT DETAILS
9. S504 MISC. DETAILS

GENERAL NOTES

1. SURVEYOR: TBD
 - A. HORIZONTAL DATUM:
 - B. VERTICAL DATUM: MLLW
 - C. TIDAL DATA: BASED ON DATA PUBLISHED BY NOAA FOR STATION 9445958, BREMERTON WA. EXTREME WATER LEVELS ARE ESTIMATED 1% ANNUAL EXCEEDANCE LEVELS FOR STATION 9447130 SEATTLE, WA

EXTREME HIGH WATER (ESTIMATED)	14.89
MEAN HIGHER HIGH WATER (MHHW)	11.71
MEAN HIGH WATER (MHW)	10.81
MEAN SEA LEVEL (MSL)	6.79
MEAN LOW WATER (MLW)	2.83
NAVD 88	2.52
MEAN LOWER LOW WATER (MLLW)	0.00
EXTREME LOW WATER (ESTIMATED)	-4.72

2. CONSTRUCTION SAFETY IS THE SOLE RESPONSIBILITY OF THE CONTRACTOR. THESE PLANS AND NOTES ARE NOT INTENDED TO DIRECT THE CONTRACTOR'S METHODS, TECHNIQUES, SEQUENCES, OR PROCEDURES EXCEPT AS DESCRIBED FOR CONSIDERATION IN DESIGN.
3. THE CONTRACTOR SHALL LOCATE UTILITIES IN THE WORK AREA PRIOR TO BEGINNING CONSTRUCTION.
4. THE CONTRACTOR SHALL FIELD VERIFY ALL DIMENSIONS, SITE CONDITIONS, FEATURES, AND ELEVATIONS PRIOR TO FABRICATION OR CONSTRUCTION. THE ENGINEER SHALL BE NOTIFIED IF DIFFERING CONDITIONS ARE FOUND OR IF THE DESIGN IS TO BE MODIFIED.
5. REPAIR AND PATCH ALL EXISTING SURFACES DAMAGED OR ALTERED BY NEW WORK. ALL PATCHED SURFACES SHALL BE SMOOTH, CONTINUOUS, FREE OF IMPERFECTIONS, AND IN PROPER CONDITION TO RECEIVE THE FINISH AS SPECIFIED, IN PATCHED AREAS OF ANY AREA WHERE A FINISH IS NOT SPECIFIED. CORRECTIVE WORK SHALL MATCH ADJACENT SURFACE FINISHES.
6. PROVIDE TEMPORARY BRACING TO UNFINISHED PORTIONS OF THE STRUCTURE UNTIL STABILITY OF THE FINISHED STRUCTURE IS ACHIEVED.
7. NOTIFY THE ENGINEER OF ANY OMISSIONS OR CONFLICTS REGARDING ELEMENTS SHOWN IN THE STRUCTURAL DRAWINGS BEFORE PROCEEDING WITH CONSTRUCTION.
8. THESE DRAWINGS ARE INTENDED TO PROVIDE A GENERAL DESCRIPTION OF THE SCOPE OF WORK AND SHOULD BE REVIEWED FOR INTENT AS WELL AS SPECIFIC INFORMATION. IT IS THE SOLE RESPONSIBILITY OF THE CONTRACTOR TO EXECUTE THE WORK WITH GENERALLY ACCEPTED STANDARDS OF QUALITY CONSTRUCTION TO PROVIDE A COMPLETED PROJECT, FULLY USABLE FOR ITS INTENDED PURPOSE.

DESIGN CRITERIA

CODES AND STANDARDS

1. AMERICAN INSTITUTE OF STEEL CONSTRUCTION (AISC) 360-16, SPECIFICATION FOR STRUCTURAL STEEL BUILDINGS
2. AMERICAN SOCIETY OF CIVIL ENGINEERS (ASCE) 7-16, MINIMUM DESIGN LOADS FOR BUILDINGS AND OTHER STRUCTURES
3. AMERICAN WELDING SOCIETY (AWS) AWS D1.1-2015 STRUCTURAL WELDING CODE - STEEL
4. AMERICAN WOOD COUNCIL (AWC) ANSI/AWC NDS-2018 NATIONAL DESIGN SPECIFICATION FOR WOOD CONSTRUCTION
5. INTERNATIONAL CODE COUNCIL (ICC) INTERNATIONAL BUILDING CODE (IBC), 2018, AS WELL AS STATE AND LOCAL AMENDMENTS
6. UNITED STATES ACCESS BOARD (2003) ACCESSIBLE BOATING FACILITIES

LOADS AND CRITERIA

1. DEAD LOADS: WEIGHT OF ALL FRAMING, DECKING, HARDWARE, PONTOONS, AND PERMANENTLY ATTACHED EQUIPMENT, MIN 35 PCF FOR LUMBER
2. LIVE LOADS:
 - a. UNIFORM LIVE LOAD: 40 PSF
 - b. CONCENTRATED LIVE LOAD: 400 LBS POINT LOAD AT CRITICAL LOCATION, MIN 12" FROM FLOAT EDGE
3. WIND LOADS:
 - a. BASIC WIND SPEED $v = 92$ MPH (300 YEAR RETURN, 3 SECOND GUST)
 - b. EXPOSURE: D
4. CURRENT LOAD:
 - a. 1.5 KNOTS, ESTIMATED TIDAL CURRENT
5. WAVE LOAD

	FETCH (MILES)	HS (FT)	HT (SEC)
S EXPOSURE	2.5	3.6	3.2
SSE EXPOSURE	3.1	4.0	3.5
ESE EXPOSURE	1.1	2.4	2.5

DESIGN CRITERIA (CONT)

6. LEVEL TOLERANCES:
 - a. MAX CROSS SLOPE = 1:50
7. FLOAT FREEBOARD:
 - a. DEAD LOAD ONLY: 14" - 24"
 - b. DEAD LOAD + LIVE LOAD: 10" MIN
 - c. LOW FREEBOARD FLOAT: 4" MIN, 12" MAX, ALL LOADING CONDITIONS

STEEL

1. PILES: ASTM A252, GR 3, FY = 45 KSI
2. PLATE, ANGLES: ASTM A36, FY = 36 KSI
3. ALL STEEL AND HARDWARE TO BE GALVANIZED

TIMBER

1. GLUED LAMINATED TIMBER:
 - a. SPECIES: DF/DF
 - b. GRADE: 20F-V7
 - c. FBX = 2000 PSI
2. ALL WOOD MATERIALS SHALL BE PRECUT TO SIZE AND LENGTH AND HOLES DRILLED PRIOR TO PRESERVATIVE TREATMENT AS SPECIFIED.
3. WOOD TREATMENT - ALL MEMBERS SHALL BE TREATED AFTER FABRICATION IN ACCORDANCE WITH THE CURRENT "AMERICAN WOOD PROTECTION ASSOCIATION" STANDARDS

ALUMINUM

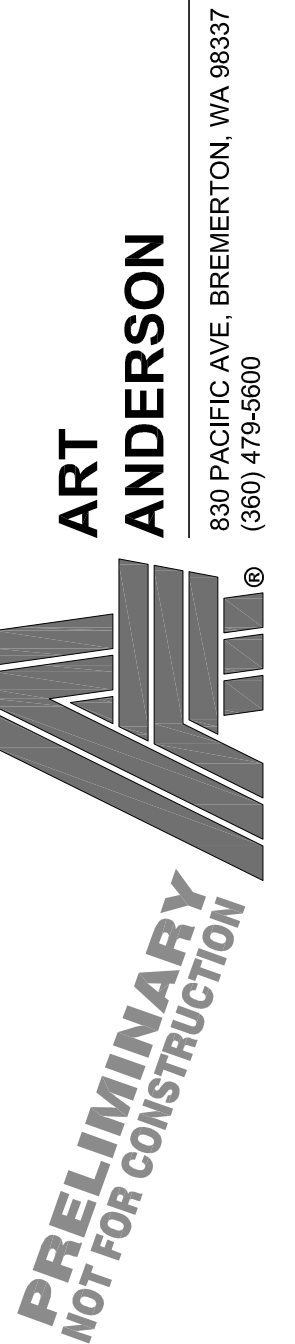
1. HSS AND ANGLES: 6061-T6
2. PLATE AND FLAT BAR: 5086-T116
3. PIPE: 6063-T6

ABBREVIATIONS

ELEV	ELEVATION
MHHW	MEAN HIGH HIGH WATER
MLLW	MEAN LOW LOW WATER
OC	ON CENTER
OHWM	ORDINARY HIGH WATER MARK
TYP	TYPICAL

LEGEND

- # ELEVATION
 ~ 5 ~ CONTOUR LINE



PORT OF SILVERDALE
 NON-MOTORIZED FLOAT DESIGN
 P.O. BOX 310
 SILVERDALE, WASHINGTON 98383

DRAWN: JHL/MMW

DESIGNED: ADT

CHECKED: RBC

ISSUE DATE
17 AUG 2022

REVISIONS

JOB NO
FWPSI001.003

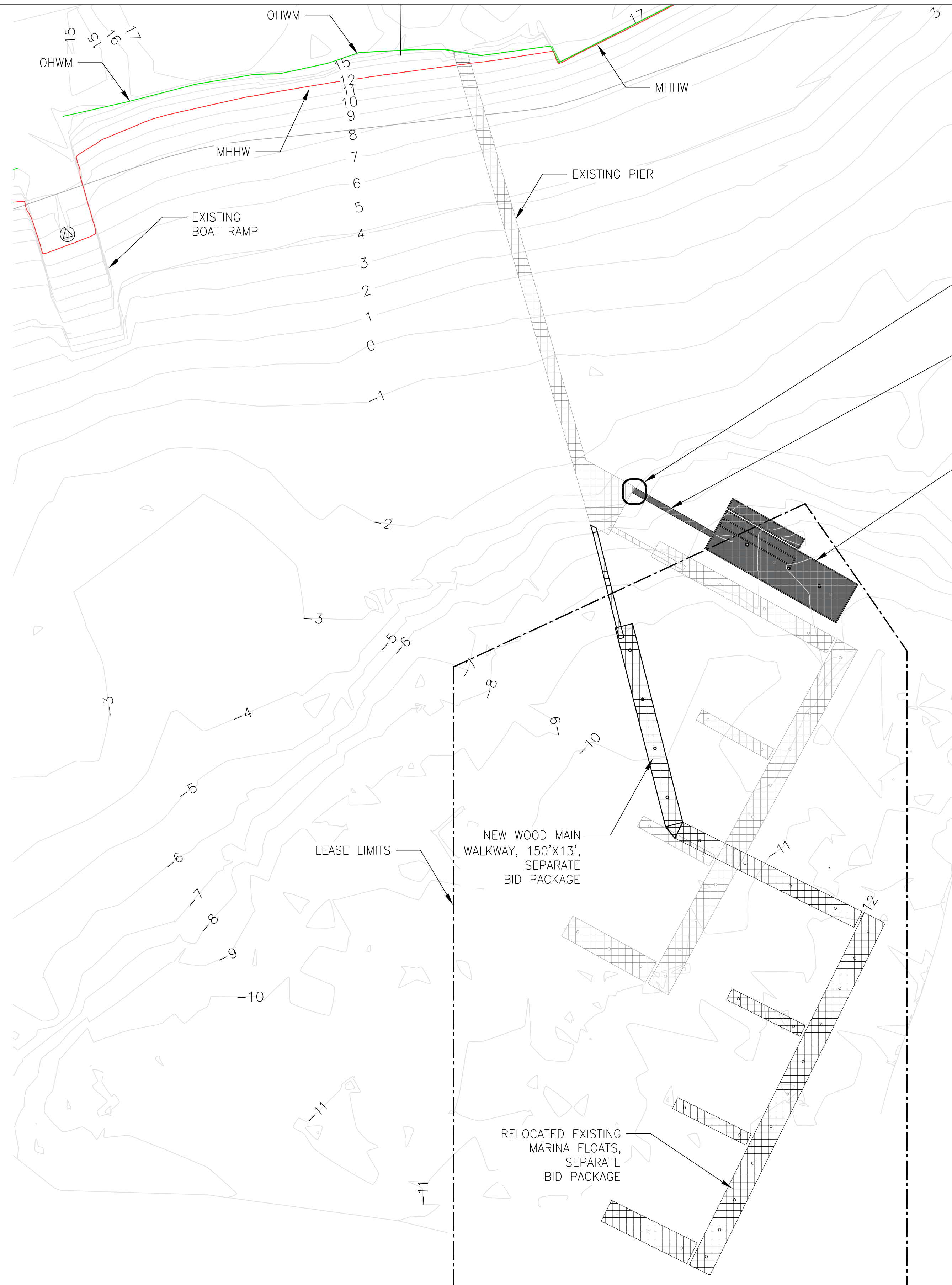
SHT TITLE
DRAWING INDEX,
NOTES, ABBREVIATIONS,
& LEGEND

SHT NO 2 OF 9

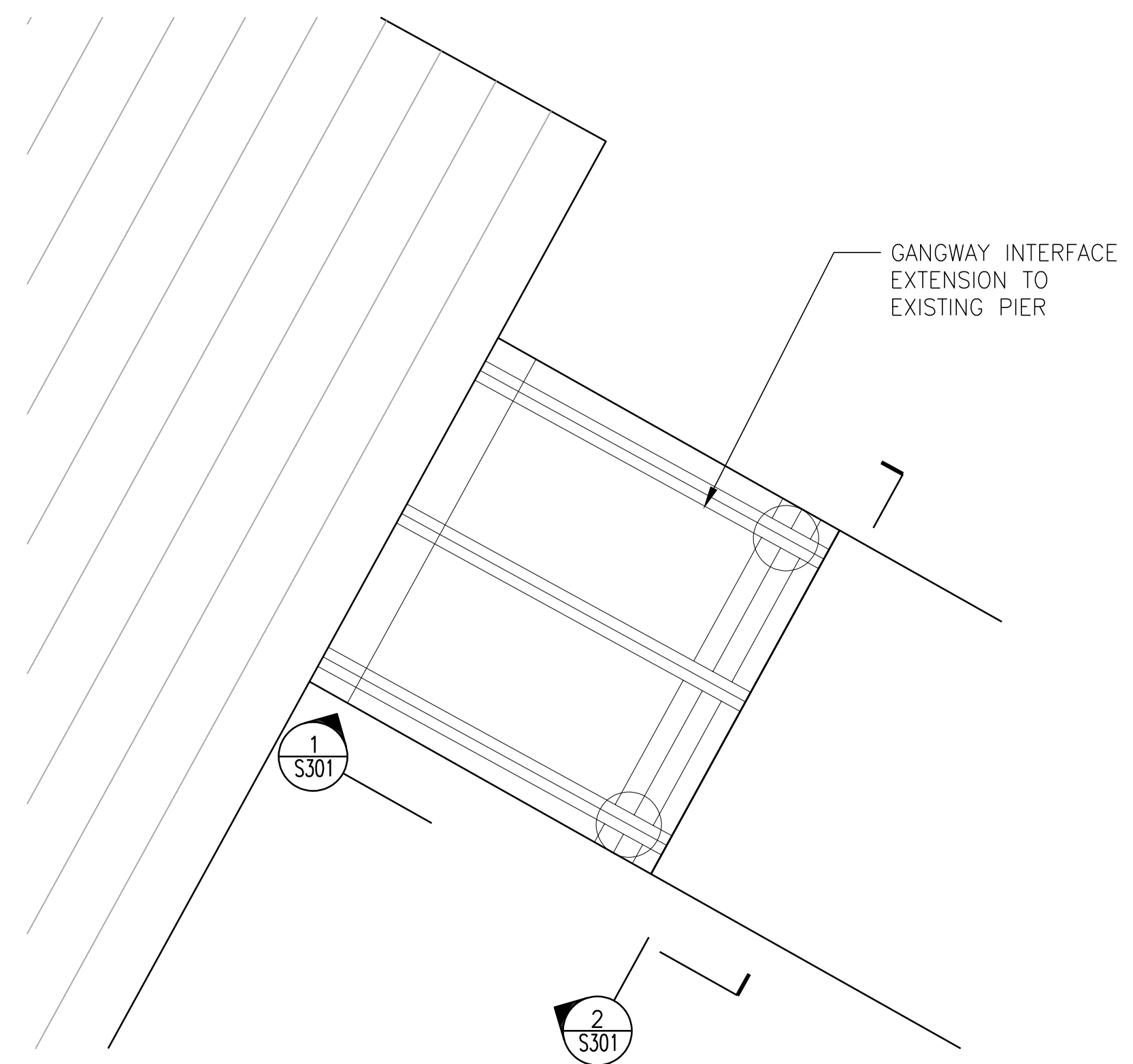
60% SUBMITTAL
 2022-AUG-17

SHEET IS 22x34 ANSI D
 IF PRINTING 11x17 USE
 50% SCALE FACTOR

G002

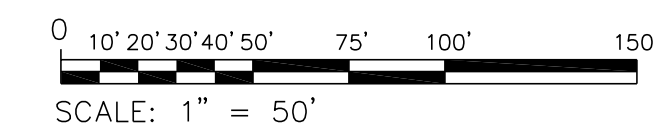


1
S101 MARINA PLAN
1"=50'



2
S101 EXISTING PIER MODIFICATION PLAN
SCALE: 1/2" = 1'-0"

60% SUBMITTAL
2022-AUG-17



SHEET IS 22x34 ANSI D
IF PRINTING 11x17 USE
50% SCALE FACTOR

ART ANDERSON
830 PACIFIC AVE. BREMERTON, WA 98337
(360) 479-5600

PRELIMINARY
NOT FOR CONSTRUCTION

PORT OF SILVERDALE
NON-MOTORIZED FLOAT DESIGN
P.O. BOX 310
SILVERDALE, WASHINGTON 98383

DRAWN: JHL
DESIGNED: ADT
CHECKED: RBC

ISSUE DATE
17 AUG 2022

REVISIONS

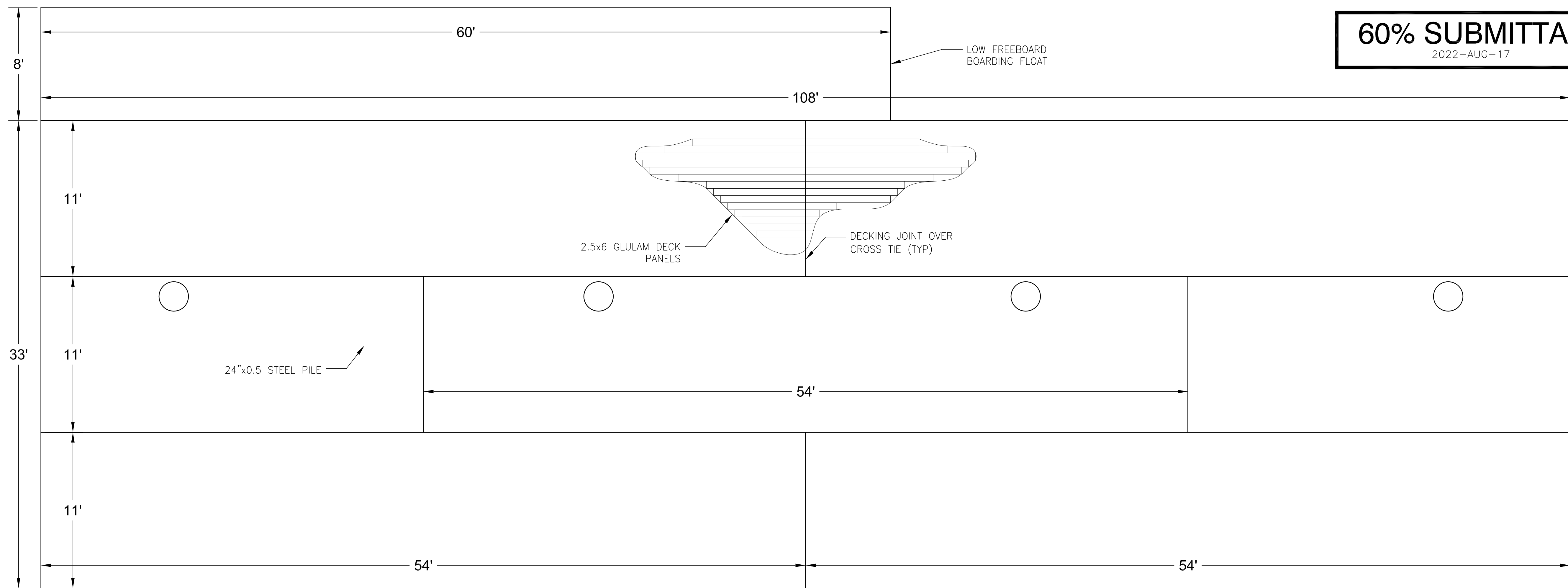
JOB NO
FWPSI001.003

SHT TITLE
MARINA PLAN

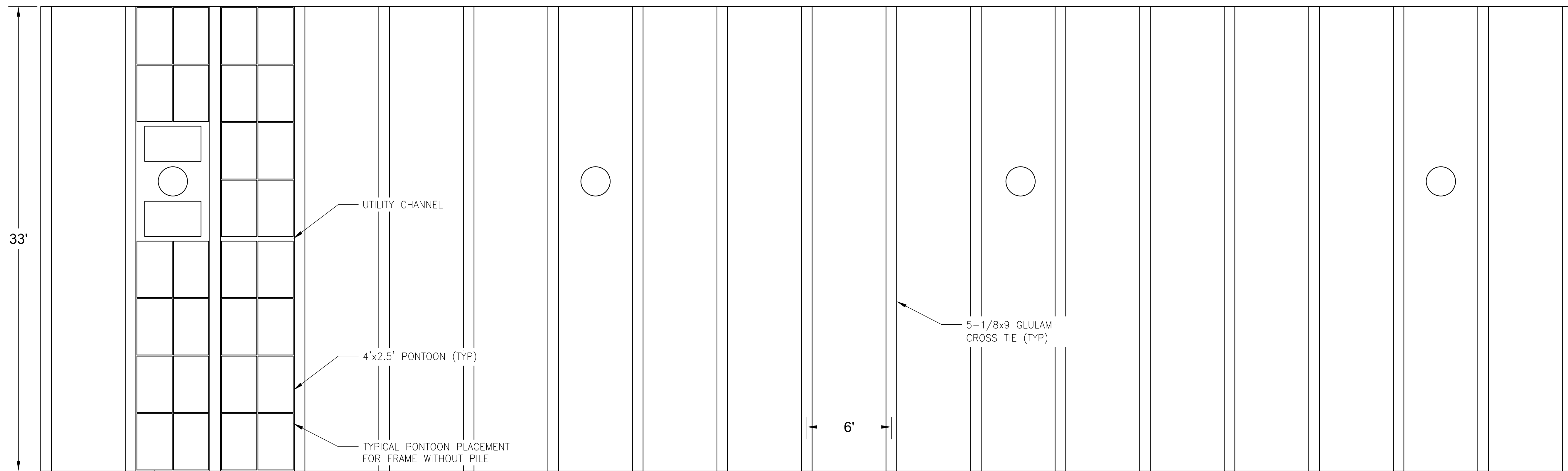
SHT NO
3 OF 9

S101

60% SUBMITTAL
2022-AUG-17



1 DECKING PLAN
1/4" = 1'-0"



2 FRAMING PLAN
1/4" = 1'-0"

0 1' 2' 3' 4' 6' 8' 12'
SCALE: 1/4" = 1'-0"
SHEET IS 22x34 ANSI D
IF PRINTING 11x17 USE
50% SCALE FACTOR

ART ANDERSON
830 PACIFIC AVE. BREMERTON, WA 98337
(360) 479-5600

PRELIMINARY
NOT FOR CONSTRUCTION

PORT OF SILVERDALE
NON-MOTORIZED FLOAT DESIGN
P.O. BOX 310
SILVERDALE, WASHINGTON 98383

DRAWN: JHL/MWM
DESIGNED: ADT
CHECKED: RBC

ISSUE DATE
17 AUG 2022

REVISIONS

JOB NO
FWPSI001.003

SHT TITLE
NON-MOTORIZED FLOAT
OVERALL PLAN

SHT NO 4 OF 9

S201

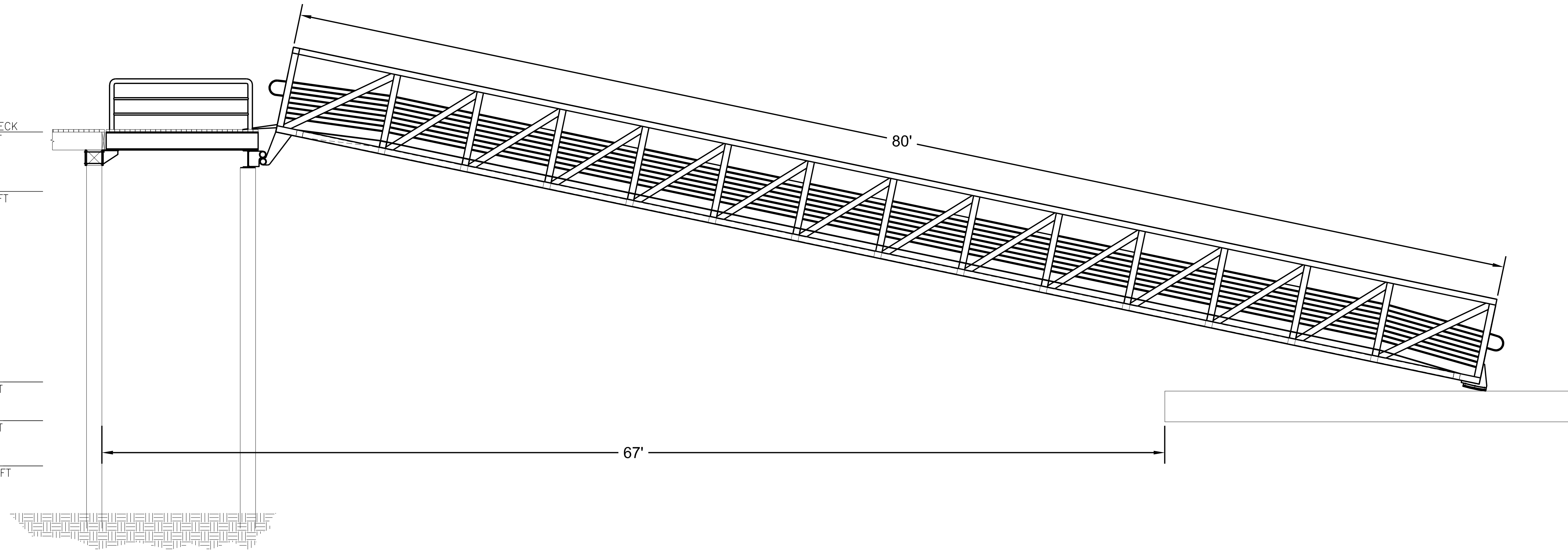
PIER DECK
18.6 FT

EHW
14.89 FT

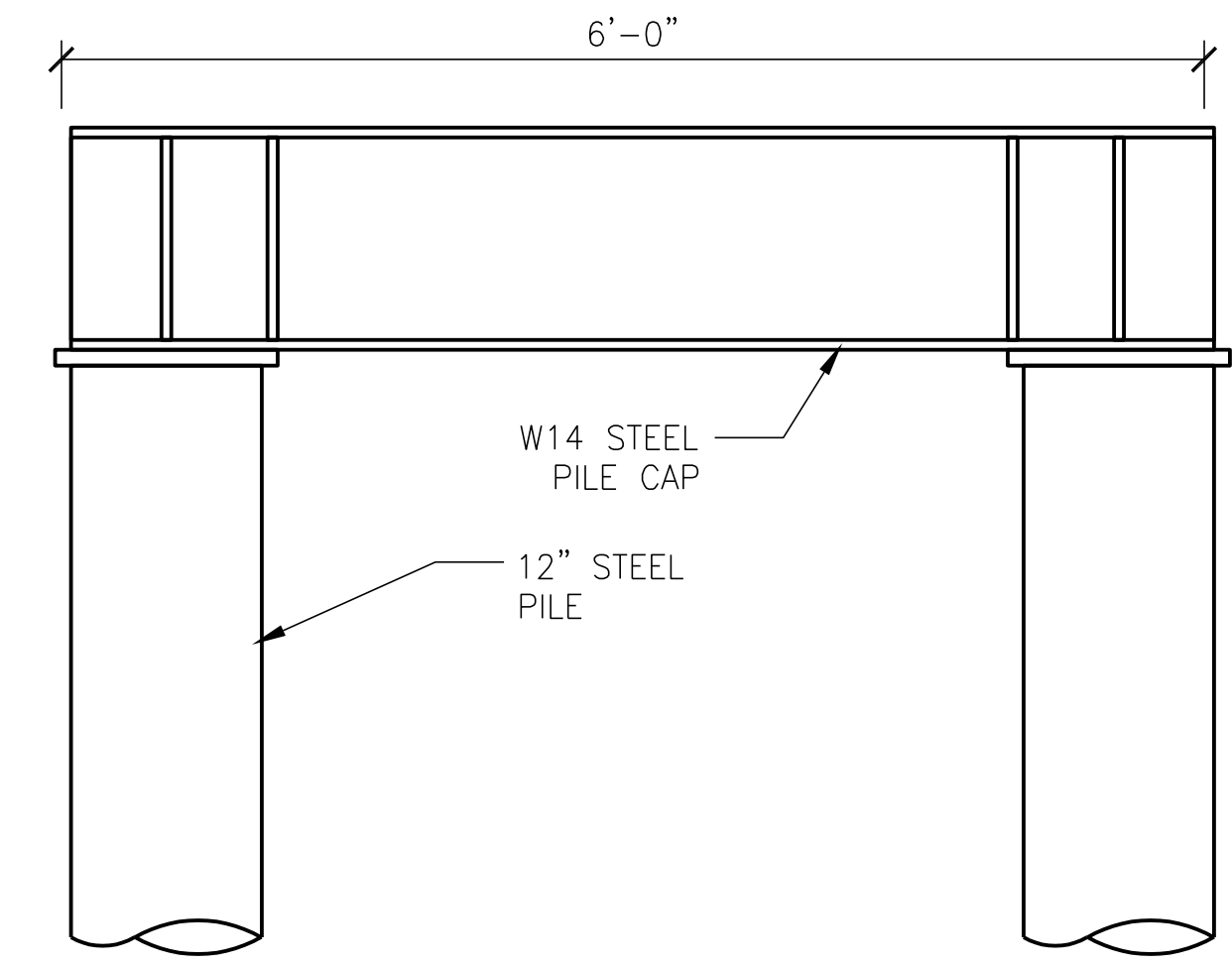
NAVD88
2.52 FT

MLLW
0.00 FT

ELW
-4.70 FT

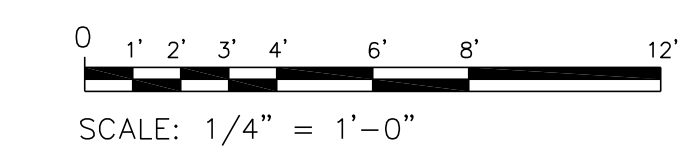


1 GANGWAY ELEVATION
S301 1/4" = 1'-0"



2 SECTION
S301 1" = 1'-0"

60% SUBMITTAL
2022-AUG-17



SHEET IS 22x34 ANSI D
IF PRINTING 11x17 USE
50% SCALE FACTOR

ART ANDERSON
830 PACIFIC AVE. BREMERTON, WA 98337
(360) 479-5600

PRELIMINARY
NOT FOR CONSTRUCTION

PORT OF SILVERDALE
NON-MOTORIZED FLOAT DESIGN
P.O. BOX 310
SILVERDALE, WASHINGTON 98383

DRAWN: JHL/MWM
DESIGNED: ADT
CHECKED: RBC

ISSUE DATE
17 AUG 2022

REVISIONS

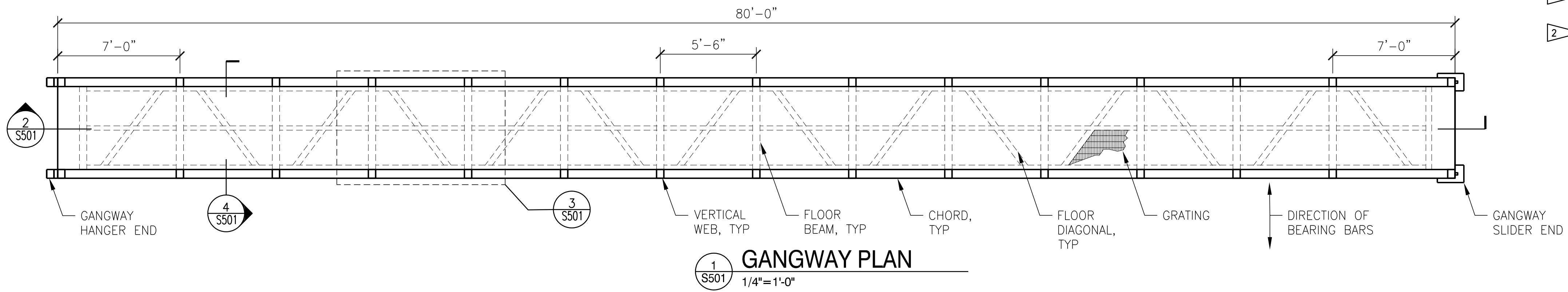
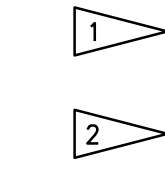
JOB NO
FWPSI001.003

SHT TITLE
MARINA AND GANGWAY
SECTIONS & ELEVATIONS

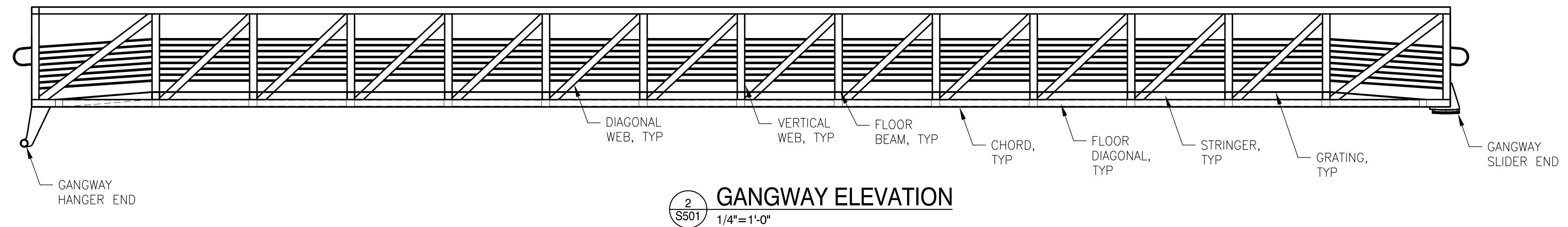
SHT NO
5 OF 9

S301

FLAG NOTES

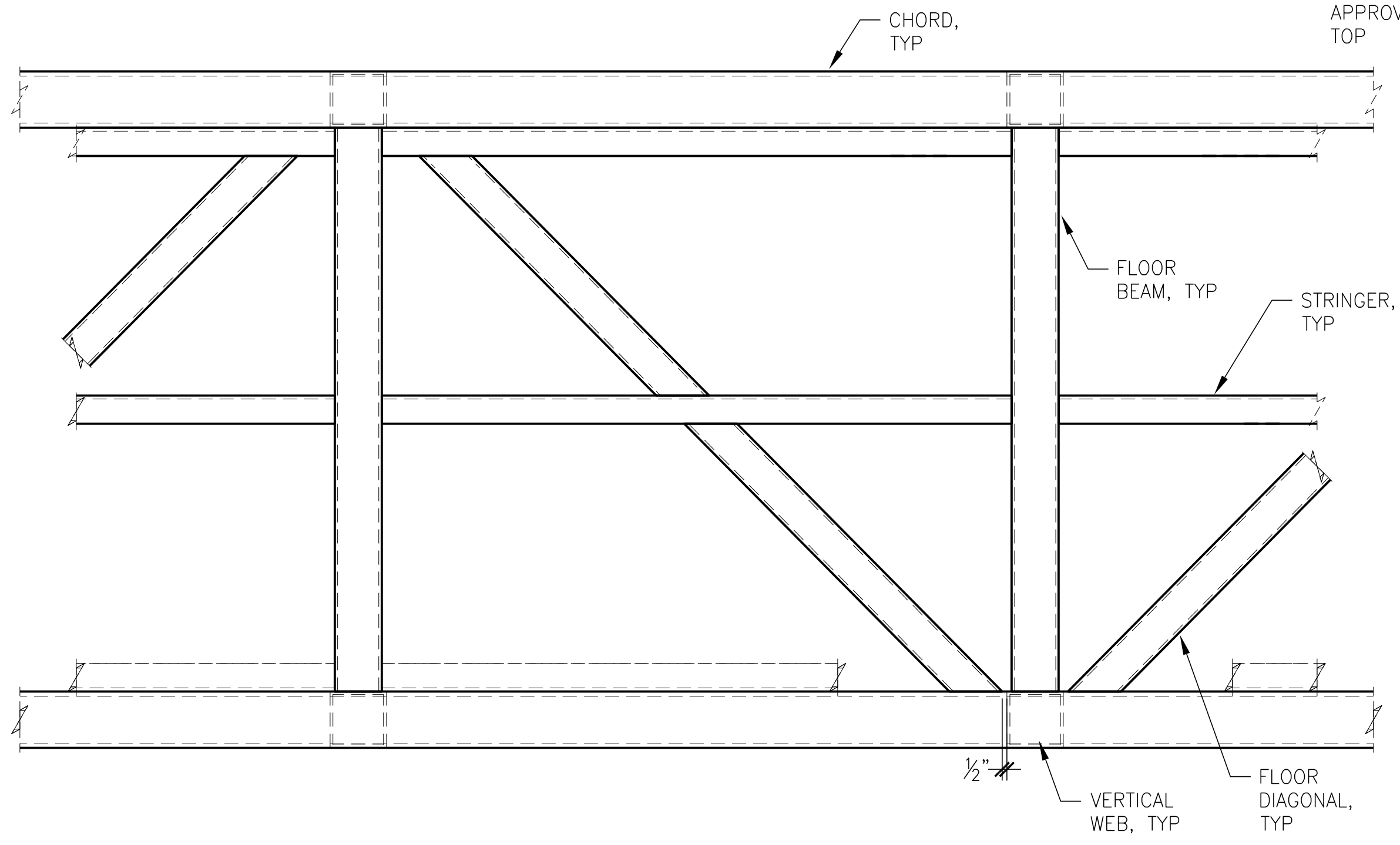


1 GANGWAY PLAN
1/4" = 1'-0"

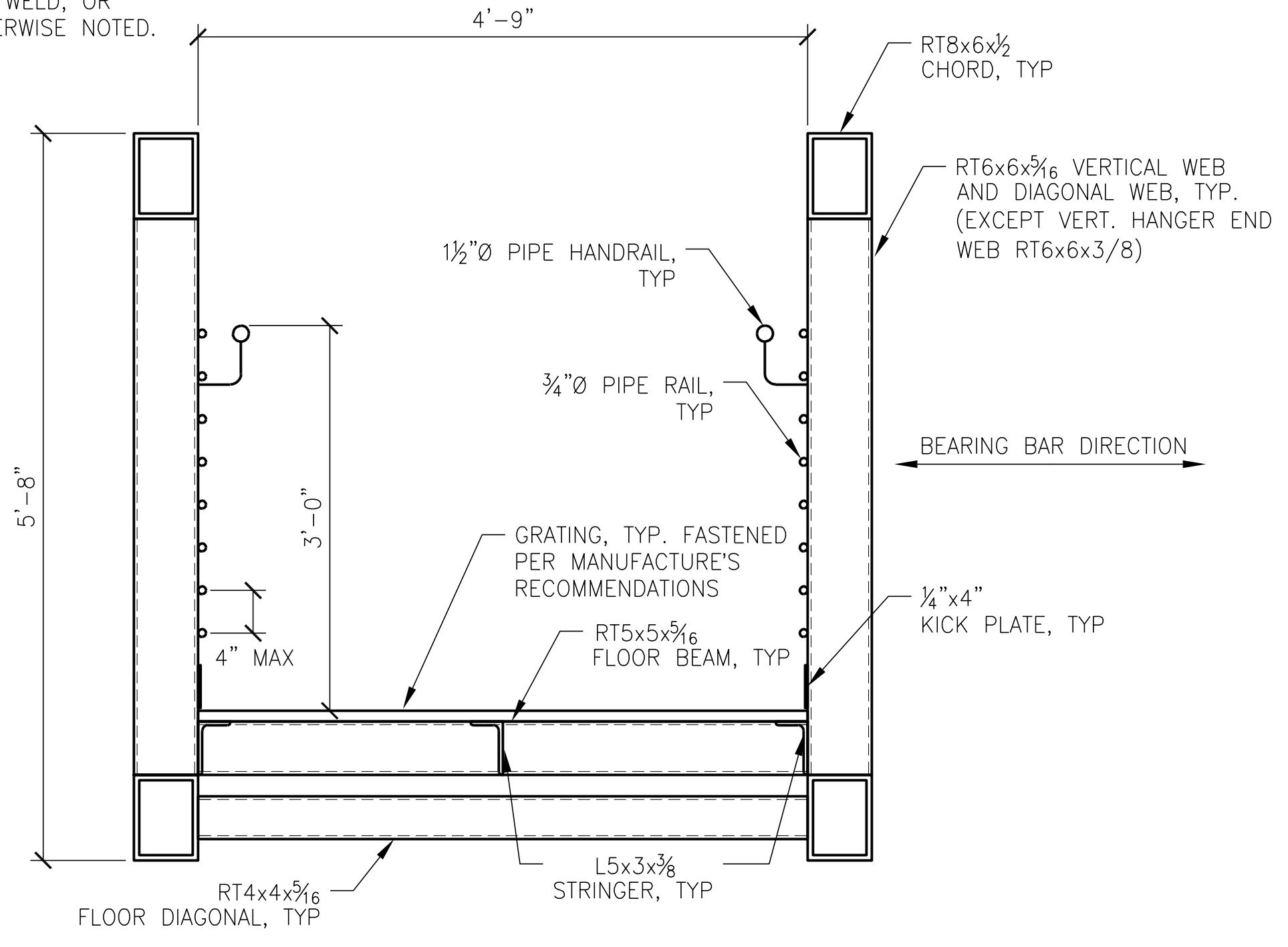


2 GANGWAY ELEVATION
1/4" = 1'-0"

ALUMINUM WELD NOTE:
ALL JOINTS SHALL BE WELDED WITH A 5/16" FILLET, OR EQUIVALENT GROOVE WELD, OR APPROVED EQUAL, UNLESS OTHERWISE NOTED.

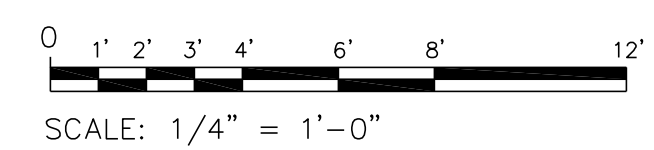
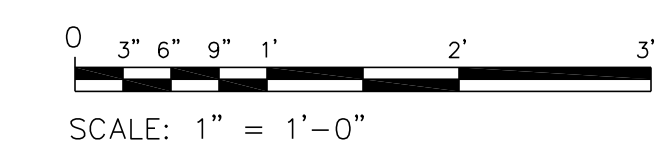


3 GANGWAY DETAIL
1" = 1'-0"



4 GANGWAY DETAIL
1" = 1'-0"

60% SUBMITTAL
2022-AUG-17



SHEET IS 22x34 ANSI D
IF PRINTING 11x17 USE
50% SCALE FACTOR

DRAWN: JHL/MMW
DESIGNED: ADT
CHECKED: RBC

ISSUE DATE
17 AUG 2022

REVISIONS

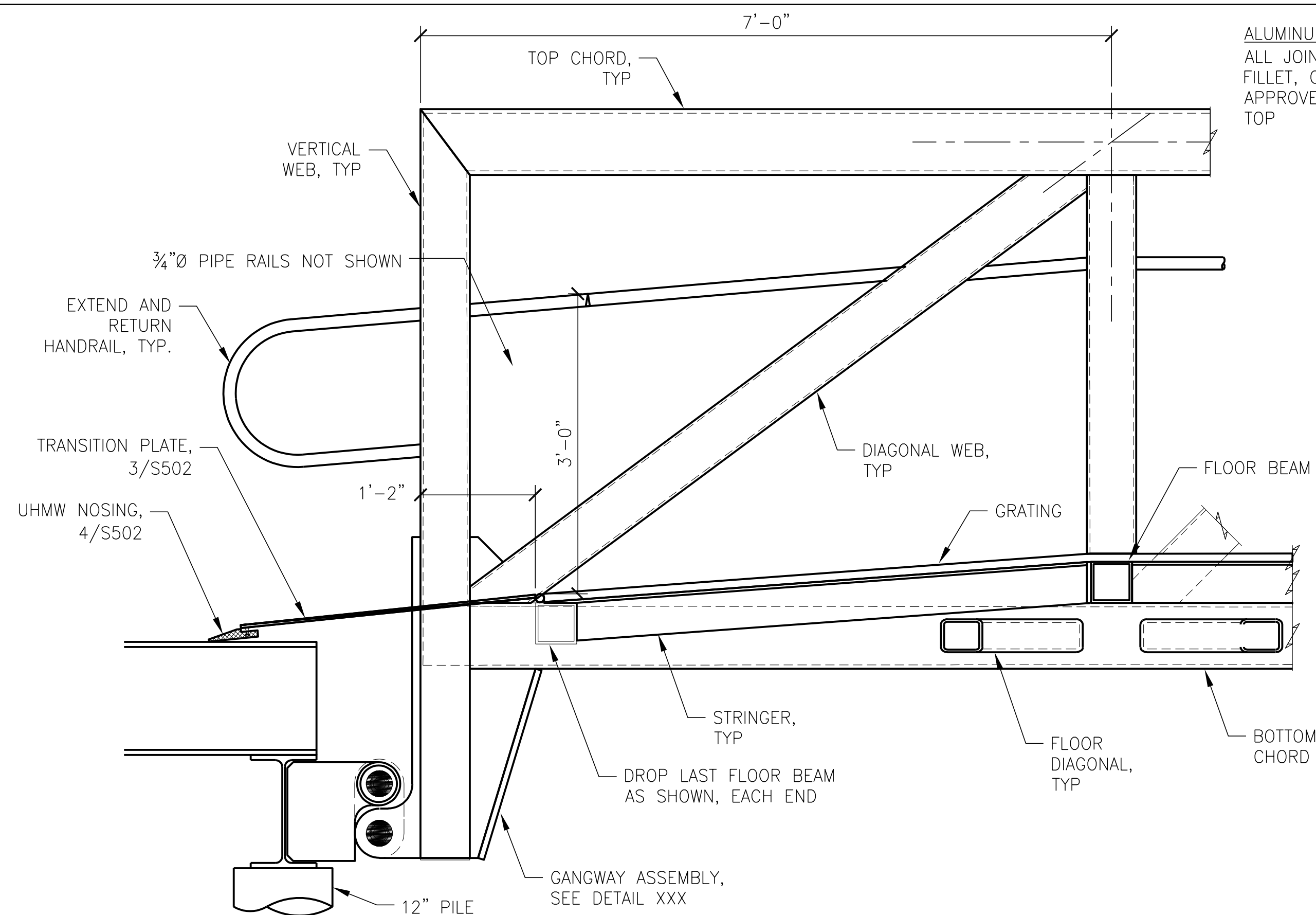
JOB NO
FWPSI001.003

SHT TITLE
GANGWAY DETAILS

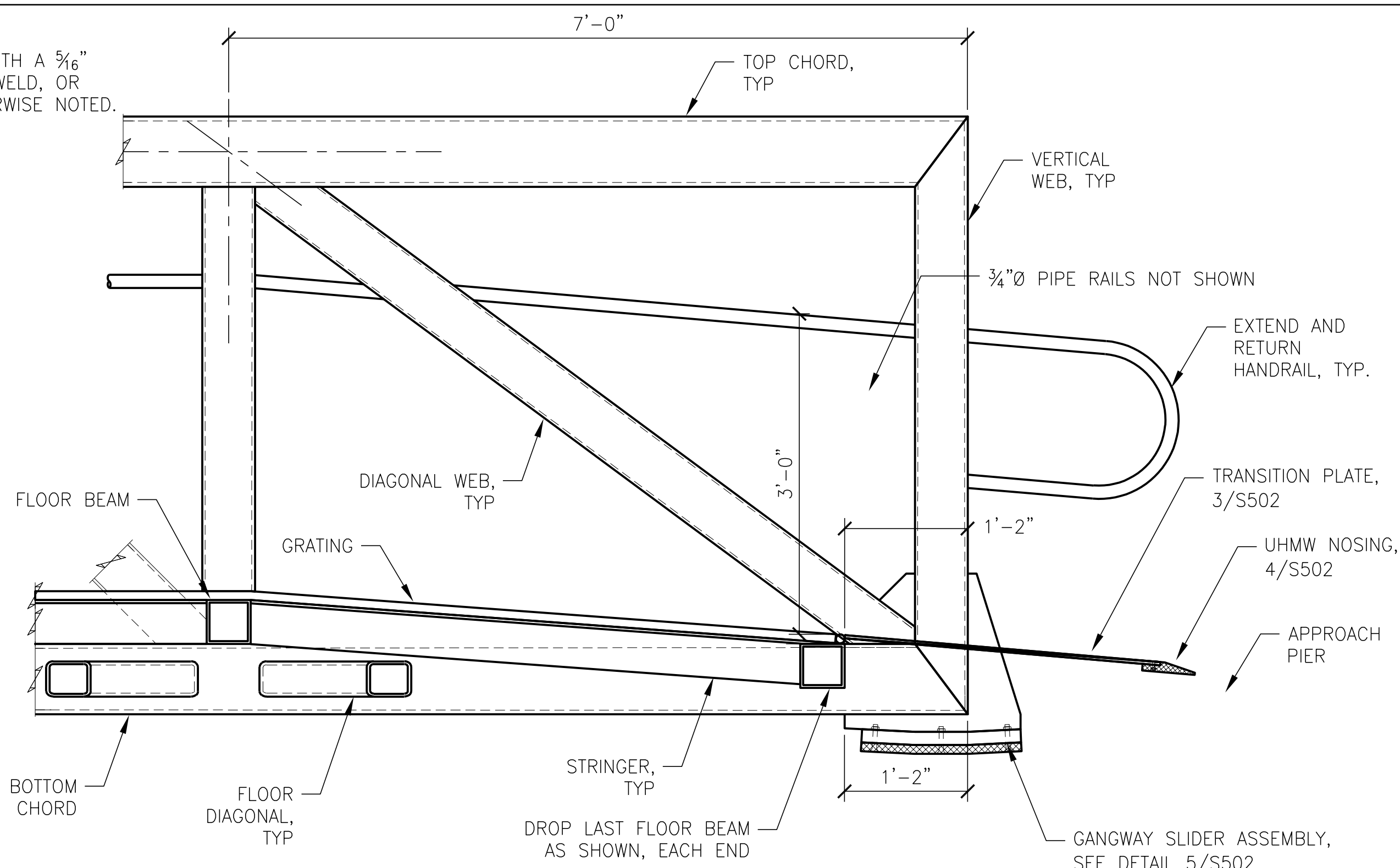
SHT NO 6 OF 9

S501

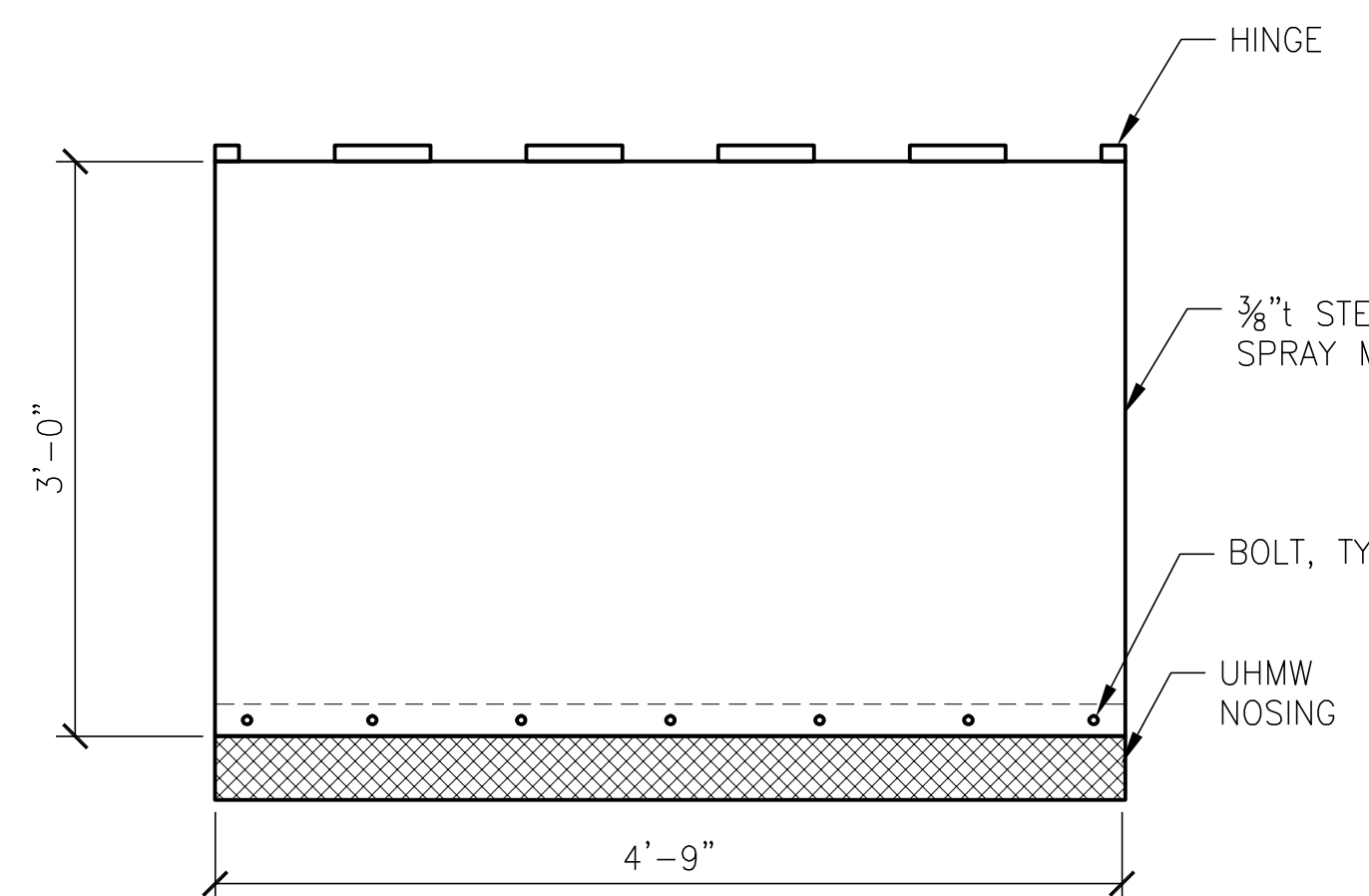
ALUMINUM WELD NOTE:
ALL JOINTS SHALL BE WELDED WITH A 5/16" FILLET, OR EQUIVALENT GROOVE WELD, OR APPROVED EQUAL, UNLESS OTHERWISE NOTED.
TOP



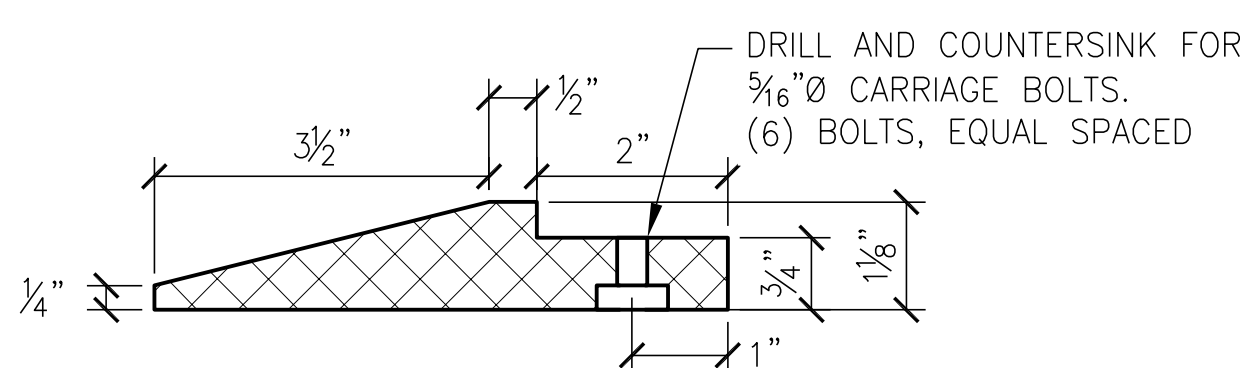
1 S502 GANGWAY END DETAIL
1"=1'-0"



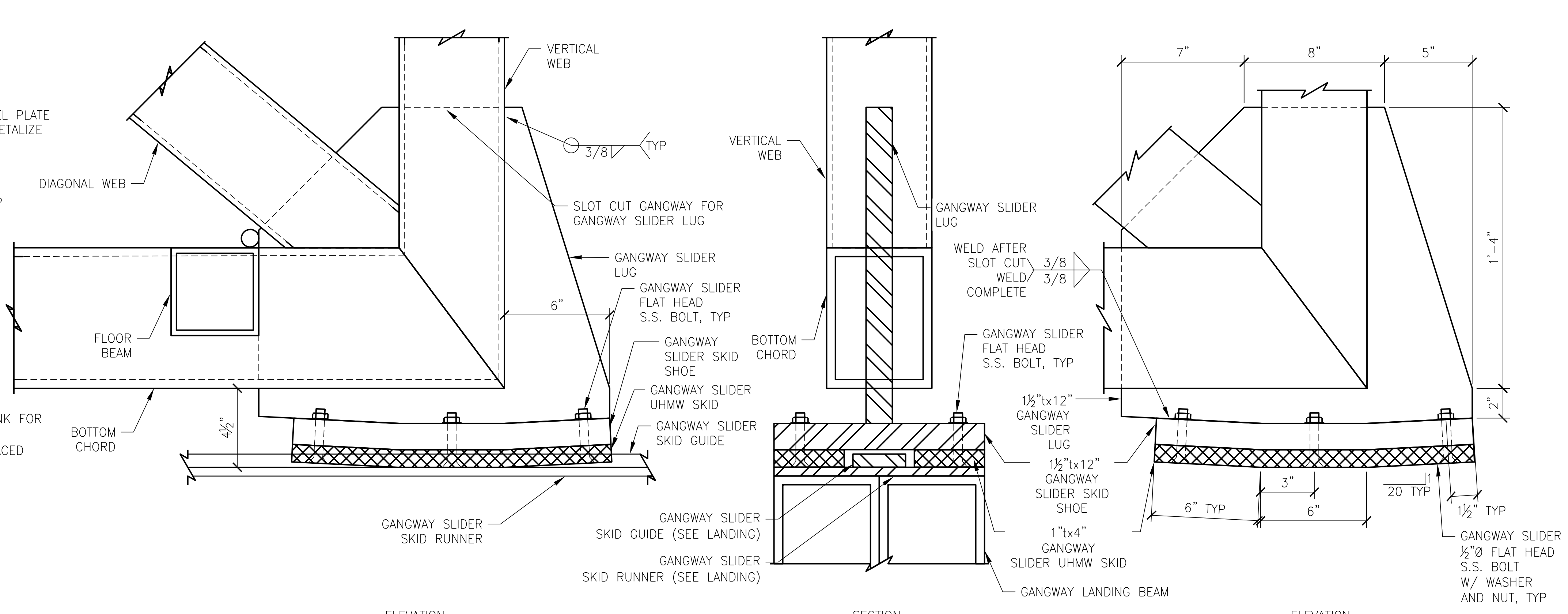
2 S502 GANGWAY END DETAIL
1"=1'-0"



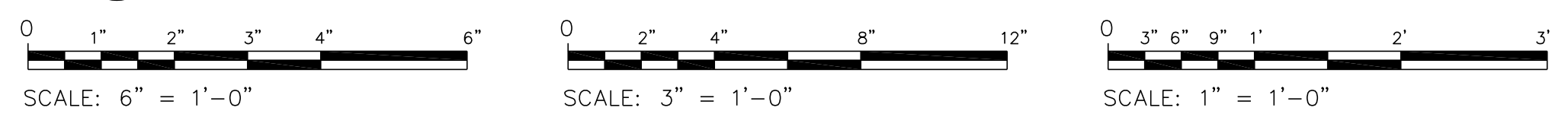
3 S502 GANGWAY TRANSITION PLATE DETAIL
1/4"=1'-0"



4 S502 GANGWAY UHMW NOSING DETAIL
6"=1'-0"



5 S502 GANGWAY SLIDER ASSEMBLY DETAIL
3"=1'-0"



60% SUBMITTAL
2022-AUG-17

DRAWN:	JHL/MMW
DESIGNED:	ADT
CHECKED:	RBC
ISSUE DATE:	17 AUG 2022
REVISIONS:	
JOB NO:	FWPSI001.003
SHT TITLE:	GANGWAY DETAILS
SHT NO:	7 OF 9

RESERVED FOR FUTURE SUBMITTALS

60% SUBMITTAL

2022-AUG-17

SHEET IS 22x34 ANSI D
IF PRINTING 11x17 USE
50% SCALE FACTOR

PORT OF SILVERDALE
NON-MOTORIZED FLOAT DESIGN
P.O. BOX 310
SILVERDALE, WASHINGTON 98383

DRAWN: JHL/MWM
DESIGNED: ADT
CHECKED: RBC

ISSUE DATE
17 AUG 2022

REVISIONS

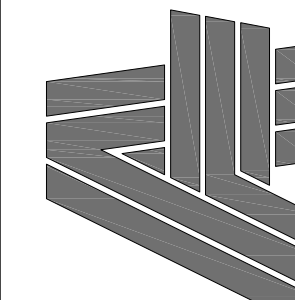
JOB NO
FWPSI001.003

SHT TITLE
FLOAT DETAILS

SHT NO 8 OF 9

S503

PRELIMINARY
NOT FOR CONSTRUCTION



ART
ANDERSON

830 PACIFIC AVE. BREMERTON, WA 98337
(360) 479-5600

RESERVED FOR FUTURE SUBMITTALS

60% SUBMITTAL

2022-AUG-17

SHEET IS 22x34 ANSI D
IF PRINTING 11x17 USE
50% SCALE FACTOR

PORT OF SILVERDALE
NON-MOTORIZED FLOAT DESIGN
P.O. BOX 310
SILVERDALE, WASHINGTON 98383

DRAWN: JHL/MWM
DESIGNED: ADT
CHECKED: RBC

ISSUE DATE
17 AUG 2022

REVISIONS

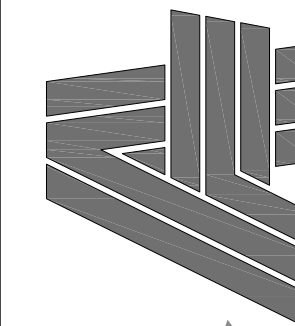
JOB NO
FWPSI001.003

SHT TITLE
MISC DETAILS

SHT NO 9 OF 9

S504

PRELIMINARY
NOT FOR CONSTRUCTION



ART
ANDERSON

830 PACIFIC AVE. BREMERTON, WA 98337
(360) 479-5600